

# DOUBLE-ACTING CYLINDERS



## MODEL:NDAC-SERIES

Capacity: 10 - 100 Tons

Stroke: 150 - 470 mm

Max. working pressure: 700 bar / 10,000 psi

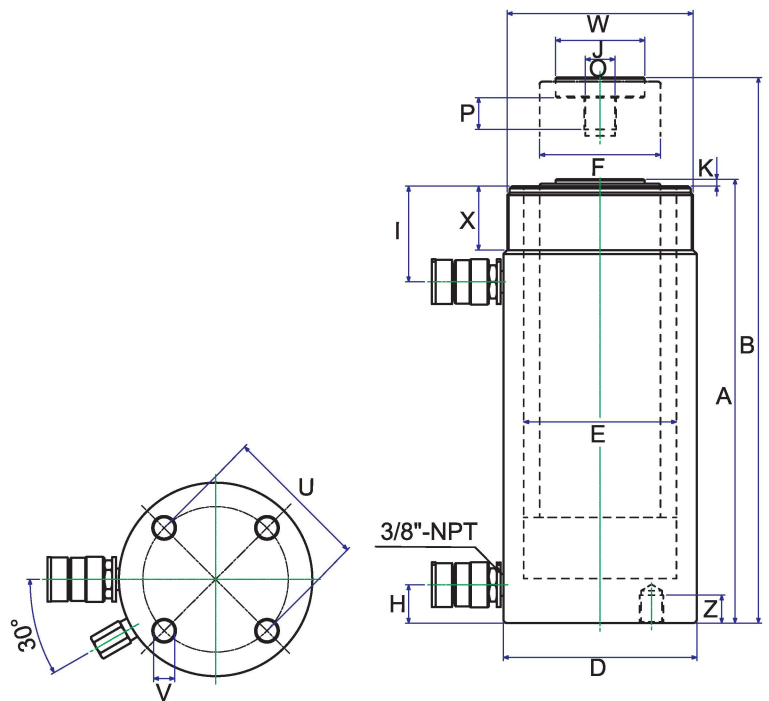
Double-Acting

### FEATURES

- Perfect for construction, shipyard, utility, mining and equipment maintenance shops.
- Piston hard chromed.
- Cylinders inside roll-polished.
- Cylinders outside blasted with black nitriding finish.

**Hand / Foot Pumps**  
Page 19-30

**Power Pumps**  
Page 31-42



## SPECIFICATIONS

Model No.	Cap. (ton)		Stroke (mm)	Oil Cap. (cm <sup>3</sup> )		A B		D	E	F	H	I	J	K	O	P	U	V	Z	W	X	Y	Weight (kgs)
	Push	Pull		Push	Pull	Height(mm)	Height(mm)																
						Retracted	Extended	Ømm	Ømm	Ømm	mm	mm	Ømm	mm	ØUN	mm	mm	Ø UNC	mm	ØUN	mm	Center Hole (Ø mm)	
NDAC1010	10	4	251	399	144	408	659	78	45	36	36.5	55	40	8	1"-8	25.4	--	--	--	2 1/4"-14	27	--	13
NDAC1012			301	478	172	458	759																15
NDAC308	30	14	209	923	426	387	596	103	75	55	25	75	50	12	1 1/2"-16	25.4	--	--	--	4"-12	50	--	20
NDAC3014			368	1625	751	547	915																29
NDAC506			150	1062	309	331	481				30												29
NDAC5013	50	14	330	2338	680	511	841	127	95	80		70	70	5	1"-12	25.4	88.9	5/8"-11	22	5"-12	50	--	43
NDAC5018			470	3330	968	675	1145				52												59
NDAC756	75	29.5	155	1752	654	348	503	152	120	95	30	75	70	5	1"-12	38	114.3	3/4"-10	22	5 3/4"-12	45	--	40
NDAC7513			333	3764	1405	526	859																58
NDAC1006	100	50.6	160	2289	1155	358	518	177	135	95	38	71	80	5	1 3/4"-12	35	139.7	3/4"-10	25	6 7/8"-12	50	--	59
NDAC10013			330	4721	2383	528	858																83