

# CYLINDERS



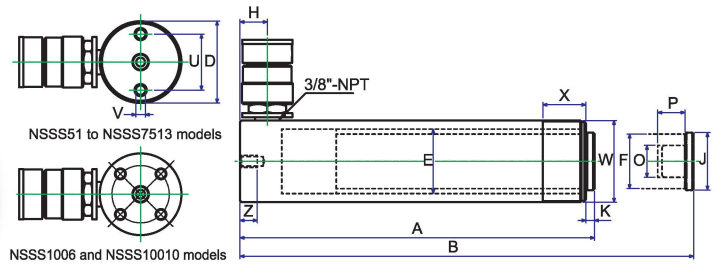
## MODEL: NISS-SERIES

Capacity: 4.5 - 100 Ton

Stroke: 25.4 - 406 mm

Max. Working Pressure: 700 bar / 10,000 psi

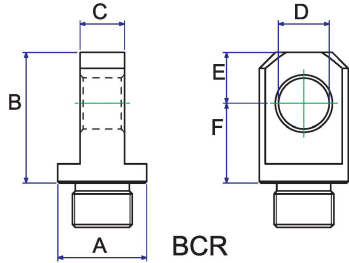
- All cylinders are single acting with spring return.
- Pistons hard chromed.
- Cylinders inside roll-polished.
- Cylinders outside blasted with black nitriding finish.



## NISS-SERIES, STANDARD CYLINDERS

Model	Capacity (ton)	Stroke (mm)	Oil Cap (cm <sup>3</sup> )	HEIGHT(mm)		D Ø mm	E Ø mm	F Ø mm	H mm	J mm	K mm	O Ø UN	P mm	U mm	V Ø UNC	Z mm	W Ø UN	X mm	Weight (kgs)
				RETRACTED	EXTENDED														
NSS51	4.5	26	17	110	136		28.6						14						1
NSS53		76	54	165	241		30						14						1.5
NSS55	5	127	90	216	343	38	30	25.4	19	25	6	3/4"-16	14	25	1/4"-20	14	1 1/2"-16	28	1.9
NSS57		183	129	273	456		30						16						2.4
NSS59		232	164	324	556		30						16						2.8
NSS101		25.4	36.5	90	115.4		42.8			—	—	#10-24UN	6.5						1.8
NSS102		51	73	121	172		42.8			40	6	1"-8	19						2.3
NSS104		101	145	171	272		42.8			40	6	1"-8	19						3.3
NSS106	10	152.5	242	247	399.5		45	38	19	40	6	1"-8	19						4.4
NSS108		203.5	323	298	501.5	57	45			40	6	1"-8	19	39	5/16"-18	13	2 1/4"-14	30	5.4
NSS1010		255.5	406	350	605.5		45			40	6	1"-8	19						6.4
NSS1012		305.5	486	400	705.5		45			40	6	1"-8	19						6.8
NSS1014		356.5	567	451	807.5		45			40	6	1"-8	19						8.2
NSS151		26.5	63	124	150.5				19										3.3
NSS152		52.5	125	149.6	202.1				19										4.1
NSS154		102.5	243	200	302.5				19										5
NSS156		153	363	271.6	424.6				25										6.8
NSS158	15	203.5	483	322	525.5	73	55	40	25	38	9.6	1"-8	25.4	47.7	3/8"-16	13	2 3/4"-16	30	8.2
NSS1510		254.5	604	373	627.5				25										9.5
NSS1512		305	724	424	729				25										10.9
NSS1514		355.7	845	474.6	830.3				25										11.8
NSS1516		406	824	523	829				25										12.8
NSS251		25.5	98	139.5	165														5.9
NSS252		51	196	165	216														6.4
NSS254		102	392	216	318														8.2
NSS256		158.5	610	273	431.5														10
NSS258	25	209.5	806	324	533.5	88	70	55	25	50	10.5	1 1/2"-16	25.4	58	1/2"-13	19	3 5/16"-12	50	12.2
NSS2510		260.5	1002	375	635.5														14.1
NSS2512		311	1196	425.5	736.5														16.3
NSS2514		361.5	1390.5	476	837.5														17.7
NSS308	30	209.5	925	387.5	597	103	75	60	57	50	10.5	1 1/2"-16	25.4	—	—	—	4"-12	50	18.1
NSS502		51	361	177	228														15
NSS504		101.5	719	229	330.5														19.1
NSS506	50	157.5	1116	283	440.5	127	95	80	33	70	3	—	—	95	1/2"-13	19	5"-12	55	23.1
NSS508		203	1446	349	552														27.1
NSS5010		260	1853	385	645														30.4
NSS5013		335.5	2377	461	796.5														37.6
NSS756		155	1752	285	440														29.5
NSS7513	75	333.5	3770	491	824.5	152	120	95	30	70	3	—	—	—	—	—	5 3/4"-12	45	59
NSS1002		50	715	238	288														43
NSS1004		100	1430	288	388														50
NSS1006	100	170	2432	358	528	177	135	105	40	70	3	—	—	139	3/4"-10	25	6 7/8"-12	45	59
NSS10010		260	3720	448	708														72.6

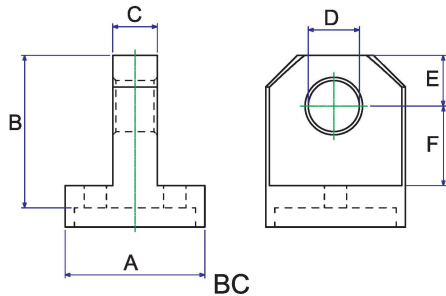
## Accessories for NSSS series



BCR

### For NSSS 5, 10, 15 & 25 Ton

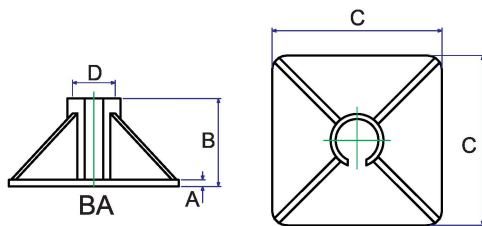
Piston Clevis						
Model	A	B	C	D	E	F
BCR5	28	41	14	16	16	25
BCR10	43	59	25	22.3	25	34
BCR15	43	62	25	22.3	25	37
BCR25	57	74	38	31.8	31	43



BC

### For NSSS 5, 10, 15 & 25 Ton

Base Clevis						
Model	A	B	C	D	E	F
BC5	44	48	14	16	16	25
BC10	63	67	25	22.3	25	35
BC15	78.5	67	25	22.3	25	35
BC25	95	79	38	31.8	31	41



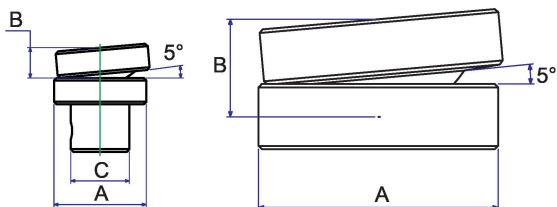
BA

### BA10 for NSSS102 through NSSS1014 BA25 for NSSS252 through NSSS2514

Cylinder Bases				
Model	A	B	C	D
BA10	10	123	230	58
BA25	16	128	280	89

ATS10 & ATS25

ATS-100



### ATS10 for NSSS10T ATS25 for NSSS25T through NSSS30T ATS100 for NSSS50T through NSSS100T

Accessories Tilt Saddles			
Model	A	B	C
ATS10	40	11.5	22.2
ATS25	50	14	36.3
ATS100	70	28.5	-