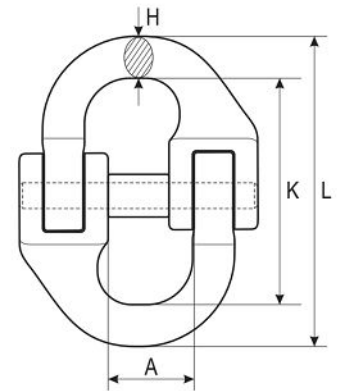


Connecting links are used to connect all chain accessories without *clevis* type fastening system. Manufactured according to EN 1677-1 standard specs.

PRO-KL CONNECTING LINK (EUROPEAN TYPE)

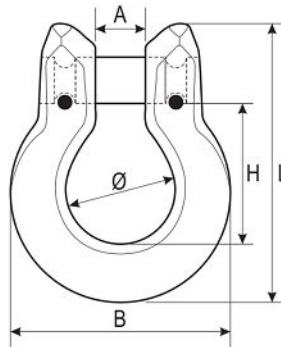


Model/ Features	WLL (t)	MBL (t)	Dimensions (mm)				Weight (kg/pc)
			A	H	K	L	
PRO-KL-06.06	1.12	4.48	16	8	42	57	0.08
PRO-KL-07.08	2	8	20.7	9.5	58	76.5	0.15
PRO-KL-10.10	3.15	12.6	28.5	12.5	71	95.3	0.3
PRO-KL-13.13	5.3	21.2	30	15.5	85.5	116	0.7
PRO-KL-16.16	8	32	36.5	20.5	104.5	144.5	1.1
PRO-KL-18.20	12.5	50	44	25	114.5	168	1.8
PRO-KL-22.22	15	60	50	27.5	138.5	193.5	3.2
PRO-KL-26.26	21.2	84.8	57.5	32	154.5	220	4.5
PRO-KL-32.32	31.5	126	68	38.5	200	281	9



For this type of connecting link, the bolt and the pin are also available as spare parts.

PRO-KLO CLEVIS OMEGA CONNECTING LINK (US TYPE)



Model/ Features	WLL (t)	MBL (t)	Dimensions (mm)					Weight (kg/pc)
			A	B	H	L	Ø	
PRO-KLO-06.06	1.12	4.48	8	41	25	52	20	0.12
PRO-KLO-07.08	2	8	11.5	51.5	34	67	23	0.22
PRO-KLO-10.10	3.15	12.6	13	62	40.5	87	30	0.36
PRO-KLO-13.13	5.3	21.2	15	80	52	109	40	0.71
PRO-KLO-16.16	8	32	21.5	98.5	61	128	47.5	1.3
PRO-KLO-18.20	12.5	50	23	116.7	73.5	152	57	2.2