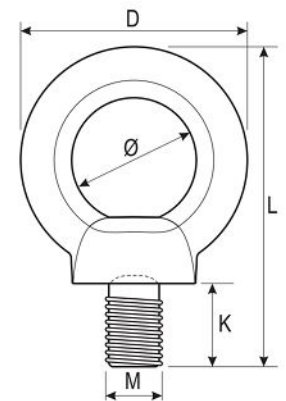


## PRO-580 EYE BOLT (DIN 580)

Model/ Features	WLL (t)		Dimensions (mm)					Weight (kg/pc)
	45°	90°	D	K	L	Ø	M	
PRO-580-M6	0.05	0.075	36.5	13	50	19	6	0.05
PRO-580-M8	0.095	0.14	36.5	13.5	50	20	8	0.06
PRO-580-M10	0.17	0.23	45	16.5	63	25	10	0.11
PRO-580-M12	0.24	0.34	54	21	75	30	12	0.18
PRO-580-M14	0.32	0.46	63	27	89.5	35	14	0.28
PRO-580-M16	0.50	0.70	63	27.5	90	34	16	0.285
PRO-580-M18	0.65	0.83	72	30	103.5	39	18	0.42
PRO-580-M20	0.83	1.20	72.5	30	103.5	39	20	0.45
PRO-580-M22	1.05	1.50	81	35	116.5	44	22	0.67
PRO-580-M24	1.27	1.80	90	36	128	48.5	24	0.87
PRO-580-M27	1.83	2.50	90	38	128	50	27	0.88
PRO-580-M30	2.60	3.60	109.5	45	154	60	30	1.66
PRO-580-M33	3.20	4.50	108	45	154	60	33	1.72
PRO-580-M36	3.70	5.10	126	55	183	68	36	2.65
PRO-580-M39	4.30	6.00	126	55	183	70	39	2.8
PRO-580-M42	5.00	7.00	144	65	212	77	42	4.03
PRO-580-M45	5.50	7.50	144	65	212	80	45	4.25
PRO-580-M48	6.10	8.60	166	70	238	90	48	6.38
PRO-580-M52	7.30	9.00	166	70	238	90	52	6.6
PRO-580-M56	8.30	11.80	184	80	267	100	56	8.8



Manufacturing standard DIN 580



## PRO-582 EYE NUT (DIN 582)

Model/ Features	WLL (t)		Dimensions (mm)				Weight (kg/pc)
	45°	90°	D	L	Ø	M	
PRO-582-M6	0.05	0.075	37	37	20	6	0.049
PRO-582-M8	0.095	0.14	36	37	19	8	0.05
PRO-582-M10	0.17	0.23	45	45	24.5	10	0.09
PRO-582-M12	0.24	0.34	54	54	30	12	0.16
PRO-582-M14	0.32	0.46	63	62	35	14	0.2
PRO-582-M16	0.5	0.7	63	63.5	35	16	0.24
PRO-582-M18	0.65	0.83	72	70	38	18	0.34
PRO-582-M20	0.83	1.2	72	70	39	20	0.36
PRO-582-M22	1.05	1.5	71	70	39	22	0.58
PRO-582-M24	1.27	1.8	90	90	49	24	0.72
PRO-582-M27	1.83	2.5	90	90	50	27	0.7
PRO-582-M30	2.6	3.6	108	113	59	30	1.32
PRO-582-M33	3.2	4.5	108	109	60	33	1.3
PRO-582-M36	3.7	5.1	126	136	70	36	2.08
PRO-582-M39	4.3	6	126	128	70	39	2.02
PRO-582-M42	5	7	144	147	80	42	3.11
PRO-582-M45	5.5	7.5	144	147	80	45	3.04
PRO-582-M48	6.1	8.6	166	168	90	48	5.02
PRO-582-M52	7.3	9	166	168	90	52	4.95
PRO-582-M56	8.3	11.8	184	187	100	56	6.69
PRO-582-M64	11	16	206	208	110	64	9.3



Manufacturing standard DIN 582

