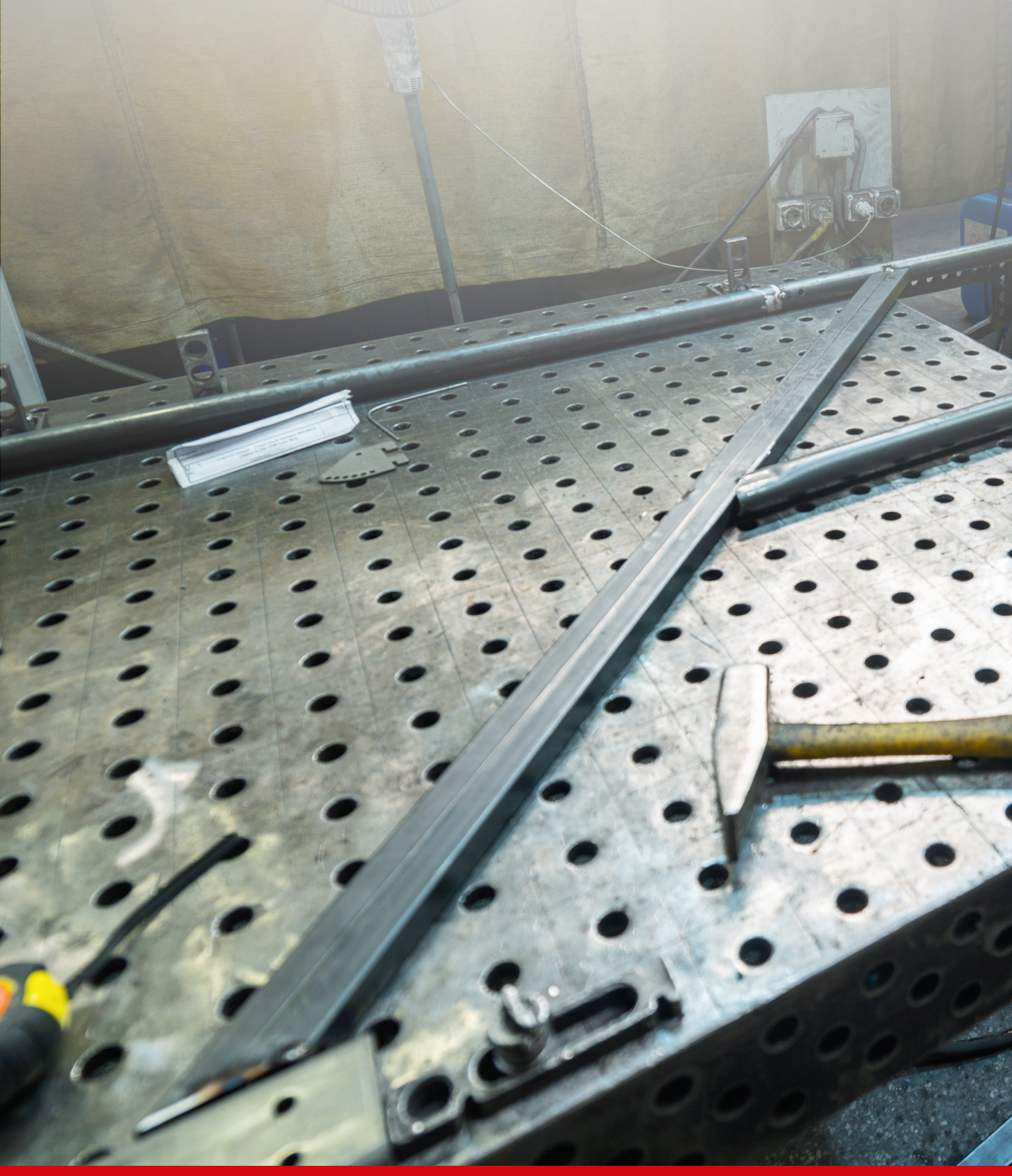


# ***ASSEMBLY AND WELDING TABLE TURNTABLE AND LIFT TABLE***



## MAT 300 S - Assembly and welding table with slotted plate and 300 kg load capacity

- ▶ Perfect for preparing welding work: Workpieces can be easily clamped and fixed with spot welds
- ▶ Fixing, clamping, welding, assembly: Can be used universally thanks to the extensive range of accessories
- ▶ Grooves in the table 10 mm wide
- ▶ Table with stable stand
- ▶ Feet adjustable in height by 6 cm
- ▶ Table top is also available separately and can also be used on existing base elements
- ▶ Work surface made of 4 mm steel with phosphated surface

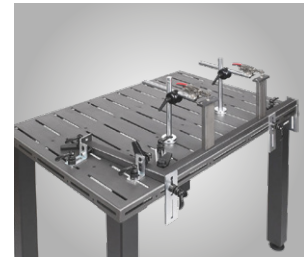


Illustration shows accessories (tensioner, lever, clamps)

<b>Model</b>		<b>MAT 300 S</b>
Art. no.		1520000

<b>Technical data</b>		
Load capacity	kg	300
Table height min. / max.	mm	850 – 910
Dimensions (L x W x H) approx.	mm	1200 x 800 x 850
Weight approx.	kg	76
<b>Transport packaging flat rate <sup>(1)</sup></b>		<b>TVP 0 = €19.00</b>

## MAT 500 S - Assembly and welding table with Ø 28 mm perforated plate and 500 kg load capacity

- ▶ Perfect for preparing welding work: Workpieces can be easily clamped and fixed with spot welds
- ▶ Fixing, clamping, welding, assembly: Can be used universally for ergonomic and flexible working thanks to the extensive range of accessories
- ▶ Table with stable stand
- ▶ Feet adjustable in height by 6 cm
- ▶ Work surface made of 4 mm steel with phosphated surface



<b>Model</b>		<b>MAT 500 S</b>
Art. no.		1520003

<b>Technical data</b>		
Load capacity	kg	500
Table height min. / max.	mm	875 – 940
Dimensions (L x W x H) approx.	mm	1200 x 800 x 875
Weight approx.	kg	77
<b>Transport packaging flat rate <sup>(1)</sup></b>		<b>TVP 0 = €19.00</b>

## MAT 300 SH - Height-adjustable assembly and welding table with Ø 28 mm perforated plate and 300 kg load capacity

- ▶ Perfect for preparing welding work. Workpieces can be easily clamped and fixed with spot welds
- ▶ Fixing, clamping, welding, assembly: Thanks to extensive accessories and lifting function, it can be used universally for ergonomic and flexible working.
- ▶ Sturdy pallet truck frame "Made in Germany"
- ▶ Work surface made of 4 mm steel with phosphated surface



Illustration shows Accessories

- ▶ Application example with 1528188 clamping bolt Ø28mm Allen key and 1528187 clamping bolt Ø28mm clamping lever



- ▶ Clamping range of the Vario clamping bolt 0 - 75 mm

<b>Model</b>		<b>MAT 300 SH</b>
Art. no.		1520002

<b>Technical data</b>		
Load capacity	kg	300
Table height min. / max.	mm	460 – 1060
Dimensions (L x W x H) approx.	mm	1200 x 800 x 460
Weight approx.	kg	106
<b>Transport packaging flat rate <sup>(1)</sup></b>		<b>TVP 0 = €19.00</b>

(1) Explanation of transport surcharges see overleaf, price TVP plus VAT.

# Accessories

## Accessories for slotted plates

**Stop and clamping element** 1528150  
 ▶ with quick-tensioner for tool-free positioning in grooves with a width of 8 - 10 mm



**Eccentric clamp Ø 30 mm** 1528152  
 ▶ Made of steel with burnished surface  
 ▶ Dimensions approx. 100 x 44 mm



› Can be used in conjunction with clamping element (1528150) as an eccentric clamp

**Swivel bearing with grub screw for eccentric clamp Ø 30 mm** 1528154  
 ▶ With M6 grub screw



› Can be used in conjunction with plate 180 x 40 mm (1528157), eccentric clamp (1528152) and clamping element (1528150) for workpiece fixing

**Stop screw** 1528155  
 ▶ Stop diameter 30 mm, length 48 mm, thread M8  
 ▶ 2 nuts and 2 washers Ø 30 mm included in the scope of delivery

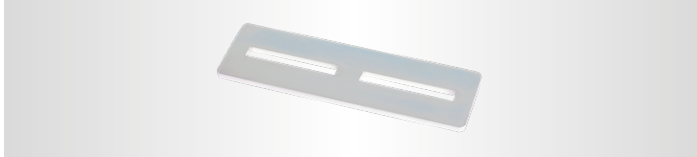


▶ Can be used in conjunction with bracket (1528158 or 1528159) and clamping element (1528150) as a flexible stop

**Plate 180 x 40 mm with thread** 1528157  
 ▶ M6 threaded hole  
 ▶ Slot width 10.5 mm



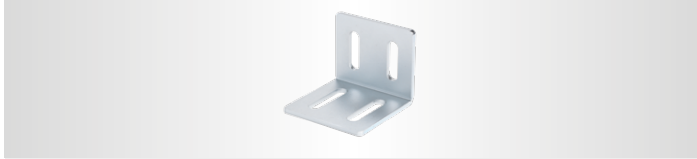
**Plate 200 x 60 mm** 1528156  
 ▶ Slot width 10.5 mm



**Angle 80 x 40 x 60 mm** 1528158  
 ▶ Slot width 12.5 mm



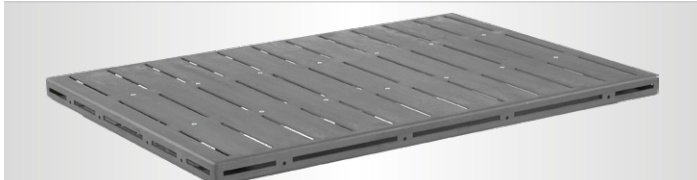
**Angle 80 x 80 x 60 mm** 1528159  
 ▶ Slot width 12.5 mm



**Adapter block 50 x 50 x 12 mm** 1528160  
 ▶ made of aluminium



**Metal table top** 1520001  
 ▶ Slot width 10 mm  
 ▶ Dimensions (L x W x H) approx.: 1200 x 800 x 50 mm  
 ▶ Weight approx. 47 kg

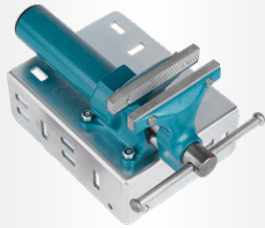


**Support rail and stop rail 1190 mm**  
 ▶ Suitable as a long stop or extension of the worktop  
 ▶ Zinc-phosphatised surface to protect against corrosion and weld spatter  
 ▶ Steel square tube 40 x 40 mm with 8 mm grooves  
 ▶ Two stop and clamping elements for tool-free positioning on slotted plates

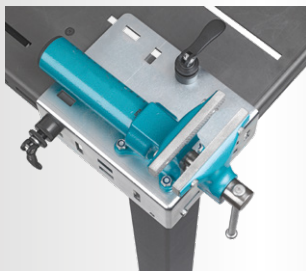


**Vice** 1528170

- ▶ Can be mounted horizontally and vertically
- ▶ Quick adjustment for large span differences without operating the swivel joint, pre-setting of the opening width using a scale
- ▶ Clamping force is 10 kN



Technical data		Vice
Span	mm	130
Clamping depth	mm	65
Jaw width	mm	120



- ▶ Image shows horizontal fixation with two stop and clamping elements (1528150) - not included in the scope of delivery

**Starter set clamping system for assembly and work table with 8 - 10 mm slots** 1528100

- ▶ Clamping system for assembly and work tables for all standard aluminium profiles and groove widths
- ▶ Push-turn-fix, it couldn't be easier or quicker
- ▶ The quick-release clamps can be used almost universally and are supplied to fit the profiles of all well-known manufacturers with groove widths of 8 and 10 mm

**Scope of delivery:**

- ▶ Organiser panel with mounting pins
- ▶ 6 quick releases Ø 30 mm
- ▶ 6 eccentric clamps Ø 30 mm made of PU
- ▶ 4 rotary bearings with threaded pin for eccentric clamp Ø 30 mm
- ▶ 1 round adapter plate with tensioner
- ▶ horizontal length 250 mm
- ▶ 1 round adapter plate with vertical clamp, length 250 mm
- ▶ 2 Adapter block
- ▶ 4 adapter brackets 80 x 40 x 60 mm
- ▶ 4 stop screws
- ▶ 6 adapter plates 180 x 40 mm



**Accessories for perforated panels**

**Vario tensioning bolt**

- ▶ Compatible with standard welding tables, standard stop elements and existing accessories
- ▶ Extremely flexible use thanks to variable and infinitely variable clamping range
- ▶ Very easy to adjust and operate thanks to new and patented clamping system
- ▶ Robust and insensitive

16 S	1528186
16 K	1528187
28 S	1528188
28 K	1528189



Model	16 S	16 K
Art. no.	1528186	1528187
Clamping	Hexagon socket	Clamping lever
Tightening torque	very high	high
Clamping range	mm	0 – 36
Diameter	mm	16

Model	28 S	28 K
Art. no.	1528188	1528189
Clamping	Hexagon socket	Clamping lever
Tightening torque	very high	high
Clamping range	mm	0 – 75
Diameter	mm	28



- ▶ Clamping a Vario clamping bolt 28 S with Allen key



- ▶ Tool-free clamping of a Vario clamping bolt 28 K
- ▶ Stepless clamping of up to three stop elements

**Vario clamping bolt set**

- ▶ 4 Vario clamping bolts each with hexagon socket and clamping lever fastening

Ø 16 mm	1528192
Ø 28 mm	1528193

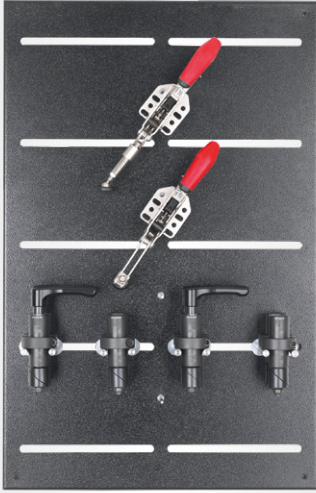


## Accessories

### Vario clamping bolt starter set

- ▶ Organiser panel with mounting pins
- ▶ 1 Horizontal clamp with clamping bolt
- ▶ 1 Vertical clamp with clamping bolt
- ▶ 4 Vario clamping bolts each with Allen and clamping lever fixation

Ø 16 mm	1528190
Ø 28 mm	1528191



### Support rail and stop rail 1190 mm

- ▶ Suitable as a long stop or extension of the worktop
- ▶ Zinc-phosphatised surface to protect against corrosion and weld spatter
- ▶ Steel square tube 40 x 40 mm with 8 mm grooves
- ▶ Two clamping bolts with clamping levers for tool-free positioning on hole plates

with clamping bolt Ø 16 mm	1528182
----------------------------	---------



### High-quality quick-tensioners with variable tension height

- ▶ Infinitely variable equalisation function for workpieces with different clamping heights or widths without readjustment on the spindle
- ▶ Galvanised and passivated
- ▶ Ergonomic, oil-resistant handle with large palm rest and soft component
- ▶ Loss protection for the pressure screw at the end of the clamping arm



› Stepless equalisation function without adjusting the spindle

### Suitable for slotted plates

#### Right angle clamp with round adapter plate, closed

- ▶ Suitable for fixing to slotted hole plates with two stop and clamping elements, 1528150 (not included in the scope of delivery)

Length 179 mm, clamping range 0 - 25 mm	1528161
Length 253 mm, clamping range 0 - 35 mm	1528162



#### Vertical clamp with round adapter plate, closed

- ▶ Suitable for fixing to slotted hole plates with two stop and clamping elements, 1528150 (not included in the scope of delivery)

Length 173 mm, clamping range 0 - 35 mm	1528163
Length 244 mm, clamping range 0 - 40 mm	1528164



#### Horizontal clamp on tripod

- ▶ Height of the tripod 300 mm
- ▶ with clamping for grooves 8 - 10 mm

Length 179 mm, clamping range 0 - 25 mm	1528165
Length 253 mm, clamping range 0 - 35 mm	1528166



#### Vertical clamp on tripod

- ▶ Height of the tripod 300 mm
- ▶ with clamping for grooves 8 - 10 mm

Length 173 mm, clamping range 0 - 35 mm	1528167
Length 244 mm, clamping range 0 - 40 mm	1528168



#### Suitable for perforated plates Ø 16 or 28 mm

#### Horizontal clamp with round adapter plate, open

- ▶ Suitable for fixing to perforated plates
- ▶ Fixing with two clamping bolts with disc (not included in the scope of delivery)

Length 253 mm, clamping range 0 - 35 mm	1528172
---	---------



#### Vertical clamp with round adapter plate, open

- ▶ Suitable for fixing to perforated plates
- ▶ Fixing with two clamping bolts with disc (not included in the scope of delivery)

Length 244 mm, clamping range 0 - 40 mm	1528173
---	---------



#### Clamping bolt with disc

- ▶ For fixing the round adapter plate, open

Ø 16 mm	1528184
Ø 28 mm	1528185



#### Horizontal clamp with clamping bolt

- ▶ Length of the tensioner 253 mm
- ▶ Clamping range 0– 35 mm
- ▶ With clamp for perforated panels

Ø 16 mm	1528176
Ø 28 mm	1528174



#### Vertical clamp with clamping bolt

- ▶ Length of the tensioner 244 mm
- ▶ Clamping range 0– 40 mm
- ▶ With clamp for perforated panels

Ø 16 mm	1528177
Ø 28 mm	1528175



#### Vertical clamp on stand with clamping bolt for perforated plates

- ▶ Tripod height 300 mm
- ▶ Clamping range 0– 40 mm
- ▶ With clamp for perforated panels

Ø 16 mm	1528180
Ø 28 mm	1528181



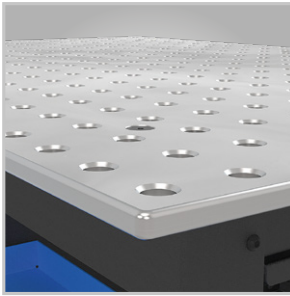
#### Horizontal tensioner on tripod with clamping bolt

- ▶ Tripod height 300 mm
- ▶ Clamping range 0– 35 mm
- ▶ With clamp for perforated panels

Ø 16 mm	1528178
Ø 28 mm	1528179



# Siegmund Workstation



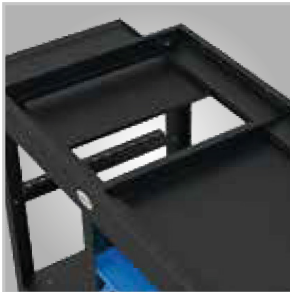
**Perforated plate (1200 x 800 mm)**

- ▶ Made from through-hardened X8.7 tool steel
- ▶ Resistant to scratches, excellent impact resistance, high point load and long service life



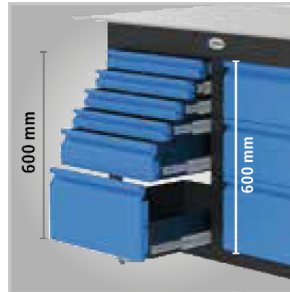
**Feet with finely adjustable discs**

- ▶ The foot plates are finely adjustable and enable a precise work surface
- ▶ The combination of feet and the optionally available rollers makes the Siegmund workstation mobile



**Dirt protection under the table top**

- ▶ There are two plates underneath the tabletop to protect your tools from welding beads and dirt
- ▶ You can pull out the two trays like drawers for cleaning.



**Space saver**

- ▶ There is defined storage space for many items in the workstation. There is space for various accessories on the shelves. So you have everything in hand. You can optionally add drawers in different heights to your workstation. Here you will find space for every type of tool.

## WORKSTATION 0806



inclusive  
1 x 120 mm drawer



Closed  
inclusive  
2 x 180 mm drawer  
1 x 240 mm drawer  
1 set of walls

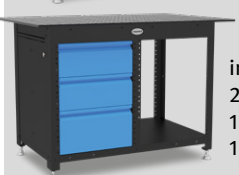
## WORKSTATION 1208



Including  
shelves



inclusive  
2 x 180 mm drawer  
1 x 240 mm drawer  
1 set of walls



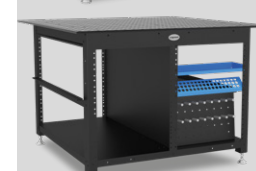
Closed  
inclusive  
2 x 180 mm drawer  
1 x 240 mm drawer  
1 set of walls



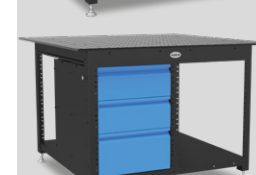
## WORKSTATION 1212



Including  
shelves



inclusive  
1 x 120 mm drawer



Closed  
inclusive  
4 x drawer 180 mm  
2 x 240 mm drawer  
2 set of walls



# Siegmund Workstation



*The intelligent concept of the workstation means you always have your tools to hand at your workstation. This creates clarity and organisation and offers you sufficient space for your accessories.*



Technical data	Siegmund Workstation
Load capacity (0806)	356 kg
Load capacity (1208)	912 kg
Load capacity (0806)	869 kg
Bore diameter	16 mm
Bore spacing	50 mm
Table top material thickness	11.5 – 13
Dimensions (L x W) (0806)	800 x 650 mm
Dimensions (L x W) (1208)	1200 x 800 mm
Dimensions (L x W) (1212)	1200 x 1200 mm
Height dimensions	850 mm

Model	Art. no.
Workstation 0806	191164900
Workstation 0806 incl. drawer	191164903
Workstation 0806 closed incl. 3 drawer	191164907
Workstation 1208	191164400
Workstation 1208 incl. shelves	191164401
Workstation 1208 incl. 3 drawer	191164407
Workstation 1208 closed incl. 6 drawer	191164409
Workstation 1212	191164600
Workstation 1212 incl. shelves	191164601
Workstation 1212 closed incl. 3 drawer	191164607
Workstation 1212 closed incl. 6 drawer	191164609

## Accessories for workstation basic package and workbench



Accessories	Art. no.
① Workstation base frame	194004002
② Shelf	194004020
③ Tool wall incl. shelf	194004025
④ Equipped with 4 rollers	194004100
⑤ Drawer 60 mm	194004200
⑥ Drawer 120 mm	194004205
⑦ Drawer 180 mm	194004210
⑧ Drawer 240 mm	194004215
⑨ Clamp holder	194164030
⑩ Bolt and prism bracket	194164035
⑪ <b>Tool set A</b>	
▶ 2 screw clamps	
▶ 6 quick-release bolts	194167320
▶ 4 stops	
▶ 1 Allen key	
⑫ <b>Tool set B</b>	
▶ 4 screw clamps	
▶ 8 quick-release bolts	
▶ 6 stops	194167340
▶ 2 Stop and clamping angle	
▶ 1 Allen key	
▶ 1 x 100 mm vice	
⑬ Eccentric stop Ø 75 mm - nitrided	194160403 N
⑭ Flex stop 12 x 83 mm - aluminium	194160412
⑮ Universal stop 80 L - nitrided	193160410 N
⑯ Universal stop 115 L - nitrided	193160420 N
⑰ Angle setting template - nitrided	194160455 N
⑱ Stop and clamping bracket 50 L - nitrided	194160105 N
⑲ Stop and clamping angle 90 X - nitrided	193160108 N
⑳ Stop and clamping bracket 90 L - nitrided	193160110 N
㉑ Stop and clamping bracket 300 G - nitrided	193160162 N
㉒ Stop and clamping bracket 500 G - nitrided	194160164 N
㉓ Stop and clamping bracket 500 GK left - nitrided	193160134 N
㉔ Stop and clamping bracket 500 GK right - nitrided	193160136 N

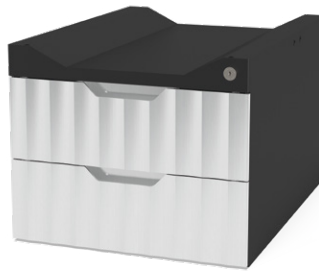
Accessories	Art. no.
㉕ Quick-release pin short - burnished	193160510
㉖ Ball stud flat short - burnished	194160522
㉗ Ball stud flat long - burnished	194160523
㉘ Countersunk bolt short - burnished	194160528
㉙ Staking bolt - burnished	194160540
㉚ Connecting bolt short - nitrided	194160560 N
㉛ Magnetic clamping bolt 34 mm - aluminium	194160740
㉜ Professional screw clamp - burnished / nitrided	193160610
㉝ Professional screw clamp 45°/90° - burnished	193160630
㉞ Universal pipe screw clamp - burnished	194160604
㉟ Basic screw clamp - burnished	194160620
㊱ Prism for screw clamps - burnished / nitrided	194160656
㊲ Duo prism Ø 25 mm - burnished / nitrided	194160650
㊳ Vario prism Ø 50 mm 90°/120° with screwed-in collar - nitrided	1931606451 N
㊴ Reducing bush 28 mm -> 16 mm - burnished	194000546
㊵ Allen key 4 mm	193160852
㊶ Torch holder - burnished	193160920
㊷ Brush Ø 17 mm with protective cap	193160820
㊸ Combination whetstone 150 x 50 x 25 mm	193000942
㊹ CleanBasic 1 litre in spray bottle	194000914
㊺ CleanBasic 5 litres	194000915
㊻ Non-stick with corrosion protection 1 litre in spray bottle	194000924
㊼ Non-stick with corrosion protection 1 litre in pump bottle	194000929
㊽ Non-stick with corrosion protection 5 litres	194000926
㊾ Premium vice 100 mm	194004300
㊿ Quick-release bolt without groove, triple-burnished	194160513
⓫ Table press	

Options (ex works only)	Art. no.
Surcharge for plasma nitriding	194164004XX

## Accessories for workbenches

### Drawer box incl. 2 drawers

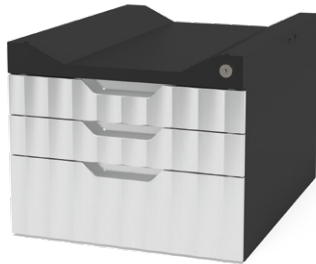
- ▶ 2x Drawer 160mm
- ▶ Lockable
- ▶ Two keys included
- ▶ Drawer pull-out 500 mm



<b>Model</b>	<b>Drawer box incl. 2 drawers</b>
Article number	19316BX000990
Dimensions (L x W x H)	623 x 472 x 387 mm
Weight	27 kg
Load capacity	100 kg

### Drawer box incl. 3 drawers

- ▶ 2x Drawer 80mm
- ▶ 1x Drawer 160mm
- ▶ Lockable
- ▶ Two keys included
- ▶ Drawer pull-out 500 mm



<b>Model</b>	<b>Drawer box incl. 3 drawers</b>
Article number	19316BX0009901
Dimensions (L x W x H)	623 x 472 x 387 mm
Weight	30 kg
Load capacity	100 kg

### Stop and clamping angle 95L

- ▶ Combination of borehole and slotted hole
- ▶ Increased stability due to struts



<b>Model</b>	<b>Stop and clamping angle 95L</b>
Article number	193160117A

### Sliding block SET swivelling + clamping bush

- ▶ 1x Set sliding block HX8 M6 swivelling (pack of 4)
- ▶ 1x set of clamping bushes with collar (pack of 4)



<b>Model</b>	<b>Sliding block SET swivelling + clamping bush</b>
Article number	193160548

### Basic screw clamp for workbench nitrided

- ▶ Vertical brace is hardened
- ▶ Horizontal brace painted / powder-coated
- ▶ Ball diameter spindle 8mm
- ▶ Trapezoidal thread spindle 12x4 mm
- ▶ Especially for table surfaces made of aluminium profiles



<b>Model</b>	<b>Base screw clamp</b>
Article number	193160621

## Turntables / Lift tables

### Height-adjustable turntable – quick and easy to achieve the right working height

#### Ergonomic working in a small space

▶ The height-adjustable turntable from Siegmund offers you a space-saving and ergonomic work surface. You can adjust the

working height steplessly by turning the plate. Use the locking unit on the side to fix the position of the worktop

#### 360° processing

▶ With the height-adjustable turntable, you can easily reach and process your workpiece from all sides

## VERSIONS:

#### Stationary base frame

▶ With sturdy base plates for a secure stand



#### Mobile base frame

▶ With sturdy swivel castors and parking brakes with the same load capacity as the stationary version



Model	System 16 stationary 1200 x 800 x 12	System 28 stationary 1200 x 800 x 15	System 16 mobile 1200 x 800 x 12	System 28 mobile 1200 x 800 x 15	System 16 stationary 1000 x 1000 x 50	System 16 mobile 1000 x 1000 x 50
Art. no.	192DS164004X7	192DS804004X7	192DM164004X7	192DM804004X7	192DS161010P	192DM161010P
Equipment	incl. perforated plate				incl. Basic table top	
Material	Through-hardened tool steel X8.7, plasma-nitrided and BAR-coated				High-quality steel S355J2+N, plasma-nitrided and BAR-coated	
Bore Ø	16 mm	28 mm	16 mm	28 mm	16 mm	16 mm
Bore spacing	50 mm	100 mm	50 mm	100 mm	50 mm	50 mm
Material thickness	12 mm	15 mm	12 mm	15 mm	12 mm	12 mm
Load capacity	912 kg	888 kg	912 kg	888 kg	843 kg	843 kg
Length	1200 mm	1200 mm	1200 mm	1200 mm	1000 mm	1000 mm
Width	800 mm	800 mm	800 mm	800 mm	1000 mm	1000 mm
Table height	780 – 1100 mm	780 – 1100 mm	780 – 1100 mm	780 – 1100 mm	780 – 1100 mm	780 – 1100 mm
Weight approx.	158 kg	182 kg	158 kg	182 kg	227 kg	227 kg

## Accessories

Accessories	Compatible with	Art. no.	€ plus VAT	Accessories	Compatible with	Art. no.	€ plus VAT
<b>① System 16 tool set A</b> ▶ 2 screw clamps ▶ 6 quick-release bolts ▶ 4 stops ▶ 1 Allen key	192DS164004X7 192DM164004X7 192DS161010P 192DM161010P 192HT164004X7	193167320	394.00	<b>③ System 28 tool set A</b> ▶ 2 screw clamps ▶ 6 quick-release bolts ▶ 6 spacer rings ▶ 6 stops ▶ 1 Allen key	192DS804004X7 192DM804404X7 192HT804004X7	193287320	623.00
<b>② System 16 tool set B</b> ▶ 4 screw clamps ▶ 8 quick-release bolts ▶ 6 stops ▶ 2 Stop and clamping angle ▶ 1 Allen key ▶ 1x 125 mm vice	192DS164004X7 192DM164004X7 192DS161010P 192DM161010P 192HT164004X7	193167340	978.00	<b>④ System 28 tool set B</b> ▶ 4 screw clamps ▶ 8 quick-release bolts ▶ 8 spacer rings ▶ 6 stops ▶ 2 Stop and clamping angle ▶ 1 Allen key ▶ 1x 125 mm vice	192DS804004X7 192DM804404X7 192HT804004X7	193287340	1368.00

## Mobile lifting table including perforated plate for loads up to approx. 500 kg

- ▶ Quick and easy to achieve the ideal working height
- ▶ Set new standards in ergonomics and

- flexibility and benefit from the wide range of possible applications
- ▶ The sturdy steel construction offers stability

even when adjusting the working height



Model	System 16 mobile 1200x800x12	System 28 mobile 1200x800x12
Art. no.	192HT164004X7	192HT804004X7
Equipment	incl. perforated plate	
Material	Through-hardened tool steel X8.7 plasma-nitrided and BAR-coated	
Bore Ø	16 mm	28 mm
Bore spacing	50 mm	100 mm
Material thickness	12 mm	15 mm
Load capacity	500 kg (without plate)	
Length	1200 mm	
Width	800 mm	
Table height	700 – 1000 mm	
Weight approx.	153 kg	177 kg

See our capabilities for yourself and request a personal consultation!

Contact: +49 (0) 951 96 555-501  
beratung@schweisskraft.de



### Accessories

Accessories	Compatible with	Art. no.
<b>① System 16 tool set A</b> <ul style="list-style-type: none"> <li>▶ 2 screw clamps</li> <li>▶ 6 quick-release bolts</li> <li>▶ 4 stops</li> <li>▶ 1 Allen key</li> </ul>	192DS164004X7 192DM164004X7	193167320
<b>② System 16 tool set B</b> <ul style="list-style-type: none"> <li>▶ 4 screw clamps</li> <li>▶ 8 quick-release bolts</li> <li>▶ 6 stops</li> <li>▶ 2 Stop and clamping angle</li> <li>▶ 1 Allen key</li> <li>▶ 1 x 125 mm vice</li> </ul>	192DS164004X7 192DM164004X7 192DS161010P 192DM161010P 192HT164004X7	
<b>③ System 28 tool set A</b> <ul style="list-style-type: none"> <li>▶ 2 screw clamps</li> <li>▶ 6 quick-release bolts</li> <li>▶ 6 spacer rings</li> <li>▶ 6 stops</li> <li>▶ 1 Allen key</li> </ul>	192DS804004X7 192DM804404X7	193287320
<b>④ System 28 tool set B</b> <ul style="list-style-type: none"> <li>▶ 4 screw clamps</li> <li>▶ 8 quick-release bolts</li> <li>▶ 8 spacer rings</li> <li>▶ 6 stops</li> <li>▶ 2 Stop and clamping angle</li> <li>▶ 1 Allen key</li> <li>▶ 1 x 125 mm vice</li> </ul>	192DS804004X7 192DM804404X7 192HT804004X7	

## Lifting tables

### Mobile lifting table including perforated plate for loads up to approx. 1000 kg

- ▶ Bores Surface in diagonal grid
- ▶ Quick and easy to achieve the ideal working height
- ▶ Set new standards in ergonomics and flexibility and benefit from the wide range of possible applications
- ▶ The sturdy steel construction offers stability even when adjusting the working height



System 16  
Mobile lift table incl. perforated plate



System 28  
Mobile lift table incl. perforated plate

Model	System 16 mobile 1500x1000x12	System 28 mobile 1500x1000x15
Art. no.	192HS164014X7	192HS804014XD7

Technical data		
Equipment	incl. perforated plate	
Material	Through-hardened tool steel X8.7 plasma-nitrided and BAR-coated	
Bore Ø	16 mm	28 mm
Bore spacing	50 mm	100 mm
Material thickness	11.5 – 13 mm	15 mm
Load capacity	1000 kg (without plate)	
Length approx.	1500 mm	
Width approx.	1000 mm	
Table height approx.	700 – 1,000 mm	
Weight approx.	335 kg	362 kg

See our capabilities for yourself and request a personal consultation!

Contact: +49 (0) 951 96 555-501  
beratung@schweisskraft.de



## Accessories

Accessories	Compatible with	Art. no.	Accessories	Compatible with	Art. no.
<b>① System 16 tool set A</b> <ul style="list-style-type: none"> <li>▶ 2 screw clamps</li> <li>▶ 6 quick-release bolts</li> <li>▶ 4 stops</li> <li>▶ 1 Allen key</li> </ul>	192DS164004X7 192DM164004X7 192DS161010P 192DM161010P 192HT164004X7	193167320	<b>③ System 28 tool set A</b> <ul style="list-style-type: none"> <li>▶ 2 screw clamps</li> <li>▶ 6 quick-release bolts</li> <li>▶ 6 spacer rings</li> <li>▶ 6 stops</li> <li>▶ 1 Allen key</li> </ul>	192DS804004X7 192DM804404X7 192HT804004X7	193287320
<b>② System 16 tool set B</b> <ul style="list-style-type: none"> <li>▶ 4 screw clamps</li> <li>▶ 8 quick-release bolts</li> <li>▶ 6 stops</li> <li>▶ 2 Stop and clamping angle</li> <li>▶ 1 Allen key</li> <li>▶ 1 x 125 mm vice</li> </ul>	192DS164004X7 192DM164004X7 192DS161010P 192DM161010P 192HT164004X7	193167340	<b>④ System 28 tool set B</b> <ul style="list-style-type: none"> <li>▶ 4 screw clamps</li> <li>▶ 8 quick-release bolts</li> <li>▶ 8 spacer rings</li> <li>▶ 6 stops</li> <li>▶ 2 Stop and clamping angle</li> <li>▶ 1 Allen key</li> <li>▶ 1 x 125 mm vice</li> </ul>	192DS804004X7 192DM804404X7 192HT804004X7	193287340

## Materials in comparison for system 16/22/28

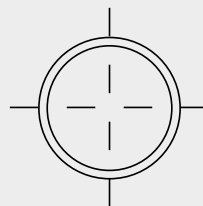
Model	PROFESSIONAL 750 with plasma nitriding	PROFESSIONAL EXTREME 8.7 with plasma nitriding	PROFESSIONAL EXTREME 8.7 PLUS with plasma nitriding
Vickers hardness	<b>Basic hardness:</b> approx. 165 - 220 Vickers <b>Surface hardness:</b> approx. 450 - 750 Vickers	<b>Basic hardness:</b> approx. 280 - 340 Vickers <b>Surface hardness:</b> approx. 450 - 850 Vickers	<b>Basic hardness:</b> approx. 280 - 340 Vickers <b>Surface hardness:</b> approx. 450 - 850 Vickers
Material	Specific base material S355J2+N, plasma-nitrided	Through-hardened tool steel made from special alloy Siegmund X8.7	Through-hardened tool steel made from special alloy Siegmund X8.7
Side panel	100 mm	100 mm	150 mm
Basic hardness	★★	★★★★★	★★★★★
Surface hardness	★★★★★	★★★★★	★★★★★
Impact resistance	★★★	★★★★★	★★★★★
Scratch resistance	★★★★	★★★★★	★★★★★
Protection against welding spatter	★★★★★	★★★★★	★★★★★
Corrosion resistance	★★★★★	★★★★★	★★★★★
Point load	★★★★	★★★★★	★★★★★
Flatness in new condition	★★★★★	★★★★★	★★★★★
Maintaining evenness after heavy use	★★★	★★★★	★★★★
Service life	★★★★	★★★★★	★★★★★

## System 16 - For filigree applications

► For simple superstructures with a low weight of up to approx. 1000 kg per foot of basic equipment, we recommend System 16. Thanks to the standard bore spacing of 50 mm, you can also clamp small parts without any problems.

► Thanks to the sophisticated Siegmund modular system, all systems can be connected to each other using connecting elements.

- 1. Bore surface 50 x 50 mm grid
- 2. Bores with 2 mm radius
- 3. Corners and edges with radius 3 / 6 mm
- 4. Side panel height 100 mm Bore spacing side panel 25 mm
- 5. Including scaling on the surface
- 6. Construction reinforced by ribs



**BORE Ø 16mm**

### MATERIAL

► Material thickness approx. 11.5 - 13 mm

### PROFESSIONAL 750

► Plasma-nitrided and BAR-coated

### PROFESSIONAL EXTREME 8.7

► Through-hardened tool steel X8.7, plasma-nitrided and BAR-coated

### PROFESSIONAL EXTREME 8.7 PLUS

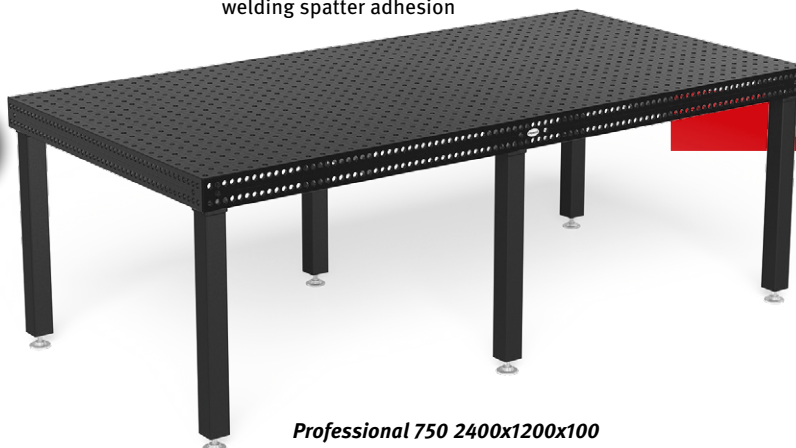
► Through-hardened tool steel X8.7, plasma-nitrided and BAR-coated; **height side panel 150 mm**

## Professional 750 series plasma nitrided – welding tables, surface hardness up to 750 Vickers!

- The bores have a diameter of 16 mm
- The table is made from high-quality S355J2+N steel, plasma-nitrided and BAR-coated

- The welding tables are fitted with a scale as standard
- Protection against rust, scratches and welding spatter adhesion

- Plasma-nitrided using a thermochemical process, making the welding table more corrosion-resistant and more resilient



*Professional 750 2400x1200x100*

Professional 750 welding table made from **high-quality steel S355J2+N plasma-nitrided**

Model	Load capacity	Length	Width	Table height incl. feet	Weight approx.	Art. no.
Professional 750 1200 x 1200 x 100	2000 kg	1200 mm	1200 mm	850 mm	261 kg	190160015P
Professional 750 2000 x 1000 x 100		2000 mm	1000 mm		354 kg	190160020P
Professional 750 2400 x 1200 x 100		2400 mm	1200 mm		503 kg	190160030P
Professional 750 3000 x 1500 x 100	4000 kg	3000 mm	1500 mm		758 kg	190160040P

# System 16

## Professional Extreme 8.7 series – Plasma-nitrided welding tables with surface hardness up to 850 Vickers!

- ▶ The bores have a diameter of 16 mm
- ▶ The table top is made from through-hardened X8.7 tool steel, plasma-nitrided and BAR-coated
- ▶ The welding tables are fitted with a scale as standard
- ▶ Protection against rust, scratches and welding spatter adhesion
- ▶ Plasma-nitrided using a thermochemical process, making the welding table more corrosion-resistant and more resilient
- ▶ Side panel with diagonal grid



*Professional Extreme 8.7-4000x2000x100*

See our capabilities for yourself and request a personal consultation!

Contact: +49 (0) 951 96 555-501  
beratung@schweisskraft.de

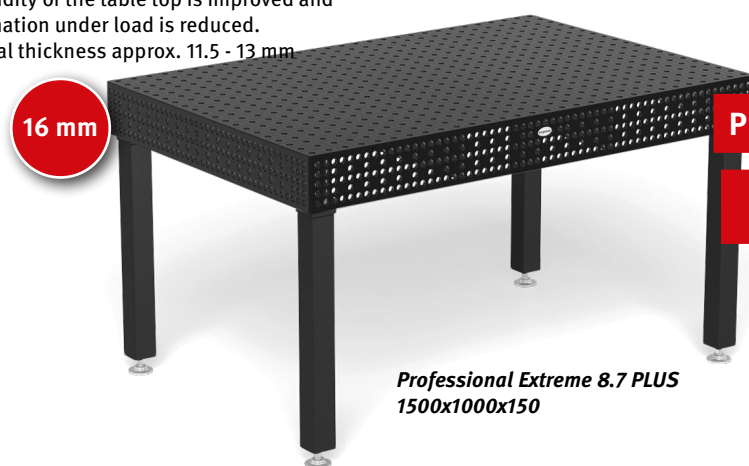


Professional Extreme 8.7 made from through-hardened tool steel X8.7 plasma-nitrided

Model	Load capacity	Length	Width	Table height incl. feet	Weight approx.	Art. no.	
Professional Extreme 8.7 - 1000x500x100	2000 kg	1000 mm	500 mm	850 mm	126 kg	190160005X7D	
Professional Extreme 8.7 - 1000x1000x100			1000 mm		192 kg	190160010X7D	
Professional Extreme 8.7 - 1200x800x100			800 mm		193 kg	190160025X7D	
Professional Extreme 8.7 - 1200x1200x100		1200 mm	1200 mm		259 kg	190160015X7D	
Professional Extreme 8.7 - 1500x1000x100			1000 mm		279 kg	190160035X7D	
Professional Extreme 8.7 - 1500x1500x100			1500 mm		394 kg	190160050X7D	
Professional Extreme 8.7 - 2000x1000x100		2000 mm	1000 mm		351 kg	190160020X7D	
Professional Extreme 8.7 - 2000x1200x100			1200 mm		412 kg	190160060X7D	
Professional Extreme 8.7 - 2400x1200x100			1200 mm		499 kg	190160030X7D	
Professional Extreme 8.7 - 3000x1500x100		4000 kg	3000 mm		1500 mm	753 kg	190160040X7D
Professional Extreme 8.7 - 4000x2000x100			4000 mm		2000 mm	1255 kg	190160055X7D

## Professional Extreme 8.7 PLUS series – plasma-nitrided welding tables with surface hardness up to 850 Vickers!

- ▶ Professional Extreme PLUS with extra high side panel for particularly demanding applications. More possibilities than ever before.
- ▶ Thanks to the higher side panel and ribbing, the rigidity of the table top is improved and deformation under load is reduced.
- ▶ Material thickness approx. 11.5 - 13 mm
- ▶ Side panel made of high-quality steel S355J2+N + plasma nitriding
- ▶ Bore surface 50x50 mm grid
- ▶ Rounded corners, edges and drill holes
- ▶ Side panel, 3 rows of bores with 25 mm spacing, 2 rows with 50 mm spacing
- ▶ Including scaling on the surface
- ▶ Construction reinforced by ribs
- ▶ Grid lines enable precise superstructures



*Professional Extreme 8.7 PLUS 1500x1000x150*

See our capabilities for yourself and request a personal consultation!

Contact: +49 (0) 951 96 555-501  
beratung@schweisskraft.de



Professional Extreme 8.7 PLUS made from through-hardened tool steel X8.7 plasma-nitrided

Model	Load capacity	Length	Width	Table height incl. feet	Weight approx.	Art. no.
Professional Extreme 8.7 PLUS 1200x1200x150	2000 kg	1200 mm	1200 mm	850 mm	264 kg	190160015X7PL
Professional Extreme 8.7 PLUS 1500x1000x150		1500 mm	1000 mm		290 kg	190160035X7PL
Professional Extreme 8.7 PLUS 2000x1000x150		2000 mm	1000 mm		374 kg	190160020X7PL
Professional Extreme 8.7 PLUS 2400x1200x150	3000 kg	2400 mm	1200 mm		518 kg	190160030X7PL
Professional Extreme 8.7 PLUS 3000x1500x150	4000 kg	3000 mm	1500 mm		815 kg	190160040X7PL
Professional Extreme 8.7 PLUS 4000x2000x150	4000 kg	4000 mm	2000 mm		1411 kg	190160055X7PL

## Accessories for welding tables system 16 mm

16 mm



Accessories	Set 1 System 16*	Set 2 System 16*	Set 3 System 16*	Set 4 System 16*	Set 5 System 16*
Art. no.	193163100	193163200	193163300	193163400	193163500
① ferrule burnished/nitrided	4 x	6 x	8 x	10 x	12 x
② Clamp 45°/90° burnished		2 x	4 x	4 x	6 x
③ Prism nitrided 90°/120°		4 x	4 x	8 x	8 x
④ Clamping bolt burnished 53 mm	12 x	18 x	24 x	30 x	36 x
⑤ Nitrided stop 80 mm		4 x	4 x	8 x	8 x
⑥ Nitrided stop 115 mm	4 x	6 x	8 x	10 x	12 x
⑦ Nitrided angle 25 mm	4 x	6 x	8 x	10 x	12 x
⑧ Nitrided angle 90 mm	4 x	6 x	8 x	10 x	12 x
⑨ Nitrided angle 300 mm		2 x	2 x	4 x	4 x
⑩ + ⑪ Nitrided rotation angle 250 mm left+right				1 x + 1 X	1 x + 1 X
⑫ + ⑬ Nitrided angle 500 mm left+right			1 x + 1 X	1 x + 1 X	1 x + 1 X
⑭ + ⑮ Nitrided angle 750 mm left+right					1 x + 1 X
⑯ Tool trolley				1 x	1 x

\*Incl. eccentric, Allen key, brush, whetstone, Probe CleanBasic, Non-stick sample, torch holder

Options (ex works only)	Art. no.
① Foot Basic equipment 850	193160857X
Surcharge per foot:	
② - 550-950	193160877XX
③ - Floor anchoring 750	193160875XX
④ - with swivel castor and parking brake 750	193160876XX
⑤ - height-adjustable with swivel castor and parking brake 600-900	193160879XX
⑥ - Sub Table Box lockable	1931609901

Accessories	Art. no.
⑦ Non-stick with corrosion protection 1 litre in spray bottle	194000924
⑧ Eccentric stop Ø 75 mm with M10 thread - nitrided	193160402 N
⑨ Universal stop 80 L - nitrided	193160410 N
⑩ Universal stop 115 L - nitrided	193160420 N
Stop and clamping angle	
⑪ -90 X - nitrided	193160108 N
⑫ -90 L - nitrided	193160110 N
⑬ -300 G - nitrided	193160162 N
⑭ -500 GK right - nitrided	193160136 N
⑮ -500 GK left - nitrided	193160134 N
⑯ -250 G with rotation angle left - cast / nitrided	193160161 N
⑰ -250 G with rotation angle right - cast/ nitrided	193160163 N
⑱ -750 GK right - nitrided	193160148 N
⑲ -w750 GK left - nitrided	193160146 N

Accessories	Art. no.
⑲ Quick-release pin short - burnished	193160510
⑳ Professional screw clamp - burnished / nitrided	193160610
㉑ Professional screw clamp 45°/90° - burnished	193160630
㉒ Vario prism Ø 50 mm 90°/120° with screwed-in collar - nitrided	1931606451 N
㉓ Tool trolley	193160910
㉔ Brush Ø 17 mm with protective cap	193160820
㉕ Torch holder - burnished	193160920
㉖ Allen key 4	193160852
㉗ Combination whetstone 150 x 50 x 25 mm	193000942
㉘ Premium 100 vice	194004300
㉙ Table press	193160780
Surface clamping countersunk bolt	
㉚ - double-burnished	193220595
㉛ - triple-burnished	1931605953
㉜ - quadruple-burnished	1931605954
Surface clamping bolt	
㉝ - double-burnished	193160590
㉞ - quadruple-burnished	1931605904
㉟ - triple-burnished	1931605903
㊱ Quick-release bolt without groove, triple-burnished	194160513

MIG/MAG

TIG inverter

Electrode inverter

Laser welding

Plasma cutters

Electrochemical processing

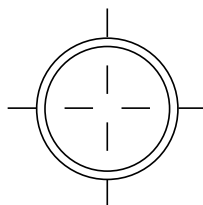
Welding accessories

# System 22

## System 22 - For heavy-duty applications

► The Professional 750 welding tables are made from high-quality S355J2+N steel and are also plasma-nitrided and coated. Due to the increased load capacity of the welding table, it is particularly suitable for processing heavy components.

- 1. Bore Surface in diagonal grid or 100 x 100 mm grid
- 2. Bores with 2.5 mm radius
- 3. Corners and edges with radius 3 / 6 mm
- 4. Side panel height 150 mm Bore spacing side panel 50 mm
- 5. Including scaling on the surface
- 6. Construction reinforced by ribs



**BORE Ø 22mm**

### MATERIAL

► Material thickness approx. 17 - 19 mm

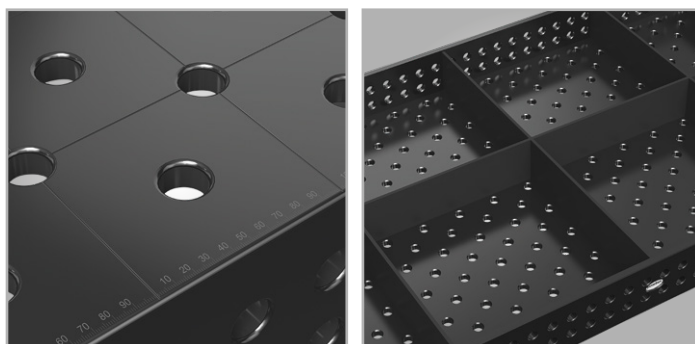
### PROFESSIONAL 750

► plasma-nitrided and BAR-coated

### PROFESSIONAL EXTREME 8.7 PLUS

► Through-hardened tool steel X8.7, plasma-nitrided and BAR-coated; **height side panel 250 mm**

Model	PROFESSIONAL 750
Material	high-quality steel S355J2+N, plasma-nitrided and BAR-coated
Plasma nitriding	✓
Basic hardness	approx. 165 - 220 Vickers
Surface hardness	approx. 450 - 750 Vickers
Material thickness	approx. 17 - 19 mm
Side panel	150 mm
Diagonal grid	✓
Scale	✓



### Professional 750 series – plasma-nitrided welding tables Surface hardness up to 750 Vickers!

- Hole arrangement in a 100 mm grid on the table top and a parallel hole arrangement in a 50 mm grid on the sides. The bores have a diameter of 22 mm
- The table is made from high-quality S355J2+N steel, plasma-nitrided and BAR-coated
- The welding tables are fitted with a scale as standard
- Protection against rust, scratches and welding spatter adhesion
- Plasma-nitrided using a thermochemical process, making the welding table more corrosion-resistant and more resilient



*Professional 750 1000x1000x150*

See our capabilities for yourself and request a personal consultation!

Contact: +49 (0) 951 96 555-501  
 beratung@schweisskraft.de



Professional 750 welding table made from high-quality steel S355J2+N plasma-nitrided

Model	Load capacity	Length	Width	Table height incl. feet	Weight approx.	Art. no.
Professional 750 1000x1000x150	2000 kg	1000 mm	1000 mm	850 mm	296 kg	190220010P
Professional 750 1200x1200x150		1200 mm	1200 mm		387 kg	190220015P
Professional 750 1500x1000x150		1500 mm	1000 mm		412 kg	190220035P
Professional 750 1500x1500x150		1500 mm	1500 mm		573 kg	190220050P
Professional 750 2000x1000x150		2000 mm	1000 mm		519 kg	190220020P
Professional 750 2400x1200x150		2400 mm	1200 mm		740 kg	190220030P
Professional 750 3000x1500x150		3000 mm	1500 mm		1097 kg	190220040P

## Professional Extreme 8.7 series plasma nitrided – welding tables with diagonal grid

- ▶ diagonal hole arrangement on the table top and a parallel hole arrangement in a 50 mm grid on the sides. The bores have a diameter of 22 mm
- ▶ The table is made from high-quality S355J2+N steel, plasma-nitrided and BAR-coated
- ▶ The welding tables are fitted with a scale as standard
- ▶ Protection against rust, scratches and welding spatter adhesion
- ▶ Plasma-nitrided using a thermochemical process, making the welding table more corrosion-resistant and more resilient



Professional Extreme 8.7 welding table made of through-hardened X8.7 tool steel, plasma nitrided **with diagonal grid**

Model	Load capacity	Length	Width	Table height incl. feet	Weight approx.	Art. no.
Professional Extreme 8.7 - 1000x1000x150	2000 kg	1000 mm	1000 mm	850 mm	295 kg	190220010XD7
Professional Extreme 8.7 - 1200x800x150		1200 mm	800 mm		291 kg	190220025XD7
Professional Extreme 8.7 - 1200x1200x150		1200 mm	1200 mm		387 kg	190220015XD7
Professional Extreme 8.7 - 1500x1000x150		1500 mm	1000 mm		412 kg	190220035XD7
Professional Extreme 8.7 - 1500x1500x150		1500 mm	1500 mm		573 kg	190220050XD7
Professional Extreme 8.7 - 2000x1000x150		2000 mm	1000 mm		519 kg	190220020XD7
Professional Extreme 8.7 - 2000x2000x150		2000 mm	2000 mm		929 kg	190220045XD7
Professional Extreme 8.7 - 2400x1200x150		2400 mm	1200 mm		725 kg	190220030XD7
Professional Extreme 8.7 - 3000x1500x150		3000 mm	1500 mm		1073 kg	190220040XD7
Professional Extreme 8.7 - 4000x2000x150 <sup>(1)</sup>		4000 mm	2000 mm		1807 kg	190220055XD7

## Professional Extreme 8.7 PLUS series – plasma-nitrided welding tables with surface hardness up to 850 Vickers!

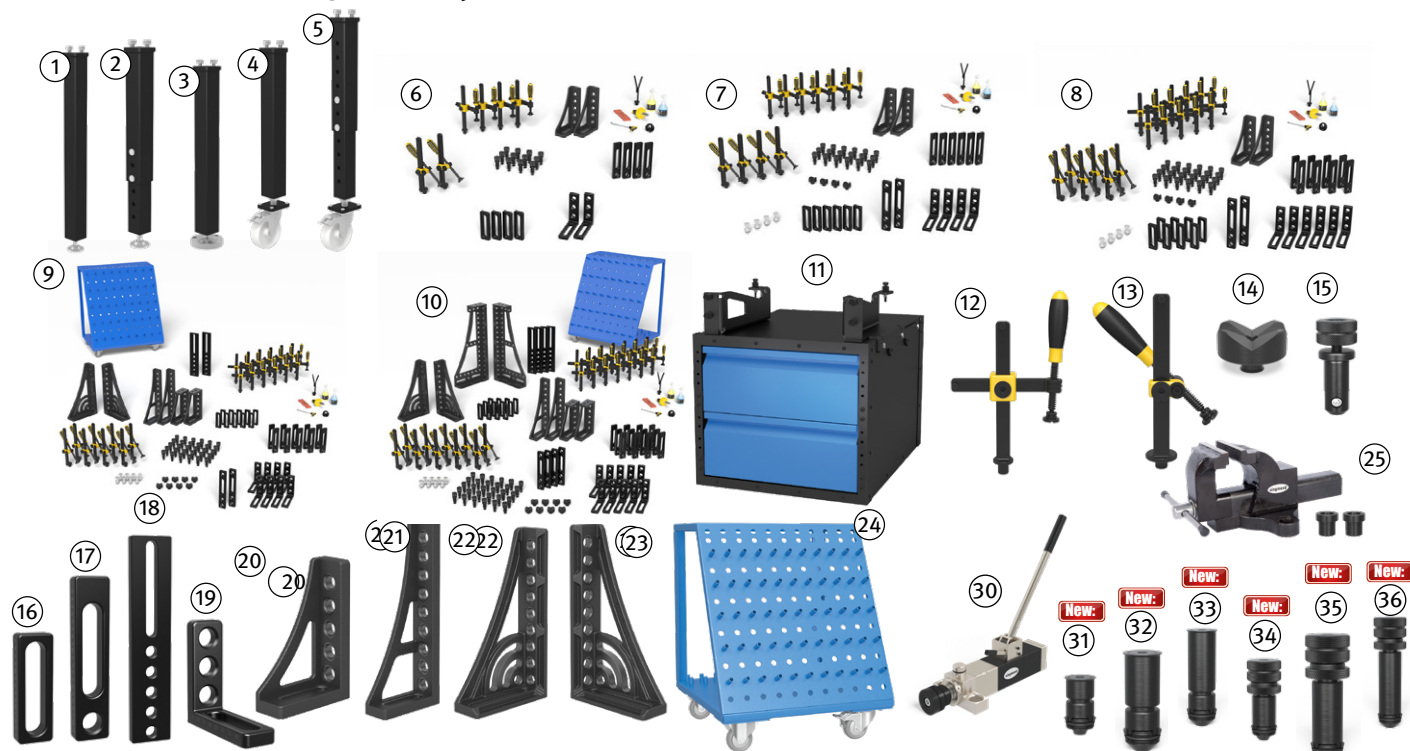
- ▶ Professional Extreme PLUS with extra high side panel for particularly demanding applications. More possibilities than ever before.
- ▶ Thanks to the higher side panel and ribbing, the rigidity of the table top is improved and deformation under load is reduced.
- ▶ Material thickness approx. 17 - 19 mm
- ▶ Side panel made of high-quality steel S355J2+N + plasma nitriding
- ▶ Bores Surface in diagonal grid
- ▶ Rounded corners, edges and drill holes
- ▶ Bores Side panel 4 rows with 50 mm spacing
- ▶ Including scaling on the surface
- ▶ Construction reinforced by ribs
- ▶ Grid lines enable precise superstructures



Professional Extreme 8.7 PLUS made from through-hardened tool steel X8.7 plasma-nitrided

Model	Load capacity	Length	Width	Table height incl. feet	Weight approx.	Art. no.
Professional Extreme 8.7 PLUS 1200x1200x250	2000 kg	1200 mm	1200 mm	850 mm	432 kg	190220015XD7PL
Professional Extreme 8.7 PLUS 1500x1000x250	2000 kg	1500 mm	1000 mm		466 kg	190220035XD7PL
Professional Extreme 8.7 PLUS 2000x1000x250	2000 kg	2000 mm	1000 mm		595 kg	190220020XD7PL
Professional Extreme 8.7 PLUS 2400x1200x250	3000 kg	2400 mm	1200 mm		808 kg	190220030XD7PL
Professional Extreme 8.7 PLUS 3000x1500x250	3000 kg	3000 mm	1500 mm		1226 kg	190220040XD7PL
Professional Extreme 8.7 PLUS 4000x2000x250	8000 kg	4000 mm	2000 mm		2061 kg	190220055XD7PL

## Accessories for welding tables system 22 mm



Accessories	⑥ Set 1 System 22 <sup>(1)</sup>	⑦ Set 2 System 22 <sup>(1)</sup>	⑧ Set 3 System 22 <sup>(1)</sup>	⑨ Set 4 System 22 <sup>(1)</sup>	⑩ Set 5 System 22 <sup>(1)</sup>
Art. no.	193223100	193223200	193223300	193223400	193223500
⑫ Screw clamp - burnished	4 x	6 x	10 x	12 x	14 x
⑬ Screw clamp 45°/90° - burnished	2 x	4 x	6 x	8 x	10 x
⑭ Vario prism Ø 50 90° / 120°		4 x	4 x	8 x	8 x
⑮ Quick-release bolt - burnished	12 x	18 x	24 x	30 x	30 x
Magnetic clamping bolt 60		4 x	4 x	8 x	8 x
⑯ Universal stop 150 L - nitrided	4 x	6 x	8 x	10 x	12 x
⑰ Universal stop 225 L - nitrided	4 x	6 x	8 x	10 x	12 x
Universal stop 300 - nitrided		2 x	2 x	2 x	4 x
⑱ Universal stop 500 S - nitrided				2 x	4 x
⑲ Stop and clamping bracket 175 L	2 x	4 x	6 x	8 x	10 x
⑳ Stop and clamping bracket 300 G	2 x	2 x	2 x		
Stop and clamping bracket 300 x 195				2 x	2 x
㉑ Stop and clamping bracket 500 G				2 x	2 x
㉒ Stop and clamping angle 500 G with left-hand rotation angle - nitrided				1 x	1 x
㉓ Stop and clamping angle 500 G with right-hand rotation angle - nitrided				1 x	1 x
Stop and clamping bracket 800 GK, left - nitrided					1 x
Stop and clamping bracket 800 GK, right - nitrided					1 x
㉔ Tool trolley				1 x	1 x

(1) Incl. eccentric, Allen key, 1 brush Ø 17 with protective cap, whetstone, 1 sample bottle of CleanBasic cleaning agent, 1 sample bottle of non-stick agent with corrosion protection

### Options (ex works only)

	Art. no.
① Foot Basic equipment 800	193220857X
② Surcharge for height-adjustable foot 500-800	193220878XX
② Surcharge for height-adjustable foot 550-900	193220877XX
③ Surcharge for base with floor anchoring 700	193220874XX
④ Surcharge for base with swivel castor and parking brake 700	193220866XX
⑤ Surcharge for height-adjustable base with swivel castor and parking brake 600-850	193220879XX

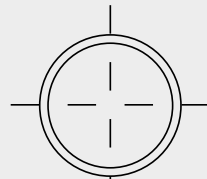
Accessories	Art. no.
⑪ Sub Table Box for System 22	1932209901
⑫ Professional screw clamp - burnished	1932206101
⑬ Professional screw clamp 45°/90° - burnished	1932206301
⑭ Vario prism Ø 50 90° / 120° with screwed-in collar - burnished	1932206451
⑮ Quick-release bolt without groove, double-burnished	19322511
Magnetic clamping bolt 60	193220740
⑯ Universal stop 150 L - nitrided	193220410 N
⑰ Universal stop 225 L - nitrided	193220420 N
Universal stop 300 - nitrided	193220426 N
⑱ Universal stop 500 S - nitrided	193220430 N

### Accessories

	Art. no.
Stop and clamping angle	
⑲ 175 L - nitrided	193220110 N
⑳ 300 G - nitrided	193220152 N
300 x 195 - nitrided	193220116 N
㉑ 500 G - nitrided	193220162 N
㉒ 500 G with left-hand rotation angle - nitrided	193220164 N
㉓ 500 G with right-hand rotation angle - nitrided	193220165 N
800 GK, left - nitrided	193220144 N
800 GK, right - nitrided	193220146 N
㉔ Tool trolley	193220910
㉕ Vice 125 set for System 22	193224320
㉖ Table press	193220780
⑳ Surface tensioning countersunk bolt, double-burnished	193220595
㉑ Surface tensioning countersunk bolt, triple-burnished	1932205903
㉒ Surface tensioning countersunk bolt, quadruple-burnished	1932205954
㉓ Surface clamping bolt, double-burnished	193220590
㉔ Surface clamping bolt, quadruple-burnished	1932205904
㉕ Surface clamping bolt, triple-burnished	1932205903

# System 28 - For heavy-duty applications

- ▶ The Professional 750 welding tables are made from high-quality S355J2+N steel and are also plasma-nitrided and coated. Due to the increased load capacity of the welding table, it is particularly suitable for processing heavy components.
- ▶ Equipped with a diagonal grid, the clamping options on this welding table are almost doubled.



**BORE Ø 28mm**

**MATERIAL**

- ▶ Material thickness approx. 24.5 - 27 mm

**PROFESSIONAL 750**

- ▶ Plasma-nitrided and BAR-coated

**PROFESSIONAL EXTREME 8.7**

- ▶ Through-hardened tool steel X8.7, plasma-nitrided and BAR-coated

**PROFESSIONAL EXTREME 8.8 PLUS**

- ▶ Through-hardened tool steel X8.7, plasma-nitrided and BAR-coated; **height side panel 300 mm**

**Professional 750 series – Plasma-nitrided welding tables with surface hardness up to 750 Vickers!**

- ▶ The bores have a diameter of 28 mm
- ▶ The table is made from high-quality S355J2+N steel, plasma-nitrided and BAR-coated
- ▶ The welding tables are fitted with a scale as standard
- ▶ Protection against rust, scratches and welding spatter adhesion
- ▶ Plasma-nitrided using a thermochemical process, making the welding table more corrosion-resistant and more resilient



**Plasma-nitrided**

**28 mm**

*Professional 750 4000x2000x200*



*Professional 750 1000x1000x200*



*Professional 750 2000x1000x200*

Professional 750 welding table made from **high-quality steel S355J2+N plasma-nitrided**

Model	Load capacity	Length approx.	Width approx.	Table height incl. feet	Weight approx.	Art. no.	Packaging surcharge	Transport surcharge
Professional 750	4000 kg	1000 mm	1000 mm	850 mm	416 kg	190280010P	TVPS2	TPZS10
1000 x 1000 x 200		1200 mm	1200 mm		544 kg	190280015P	TVPS2	TPZS11
1200 x 1200 x 200		800 mm	800 mm		408 kg	190280025P	TVPS2	TPZS10
1500 x 1000 x 200		1000 mm	1000 mm		577 kg	190280035P	TVPS2	TPZS11
1500 x 1500 x 200		1500 mm	1500 mm		801 kg	190280050P	TVPS2	TPZS13
2000 x 1000 x 200		1000 mm	1000 mm		730 kg	190280020P	TVPS2	TPZS12
2000 x 1200 x 200		1200 mm	1200 mm		843 kg	190280060P	TVPS2	TPZS13
2000 x 2000 x 200		2000 mm	2000 mm		1299 kg	190280045P	TVPS3	TPZS14
2400 x 1200 x 200		1200 mm	1200 mm		986 kg	190280030P	TVPS3	TPZS15
3000 x 1500 x 200		1500 mm	1500 mm		1517 kg	190280040P	TVPS3	TPZS16
4000 x 2000 x 200	8000 kg	4000 mm	2000 mm	2501 kg	190280055P	TVPS3	TPZS17	

1) For information on transport surcharges, see overleaf, details of transport and packaging costs TVZS within Germany plus VAT

# System 28

## Professional Extreme 8.7 series - plasma-nitrided welding tables with diagonal grid – surface hardness up to 850 Vickers

- ▶ The bores have a diameter of 28 mm
- ▶ The table top is made from through-hardened X8.7 tool steel
- ▶ The welding tables are fitted with a scale as standard
- ▶ Protection against rust, scratches and welding spatter adhesion
- ▶ Plasma-nitrided using a thermochemical process, making the welding table more corrosion-resistant and more resilient

- ▶ 1. Bore Surface in diagonal grid or 100 x 100 mm grid
- ▶ 2. Bores with 3 mm radius
- ▶ 3. Corners and edges with radius 3 / 6 mm
- ▶ 4. Side panel height 200 mm Bore spacing side panel 50 mm
- ▶ 5. Including scaling on the surface
- ▶ 6. Construction reinforced by ribs



Professional Extreme 8.7-1200x1200x200

Professional Extreme 8.7 made of through-hardened tool steel X8.7 plasma-nitrided and with diagonal grid

Model	Load capacity	Length approx.	Width approx.	Table height incl. feet	Weight approx.	Art. no.
Professional Extreme 8.7						
1000 x 1000 x 200	4000 kg	1000 mm	1000 mm	850 mm	400 kg	190280010XD7D
1200 x 1200 x 200		1200 mm	1200 mm		521 kg	190280015XD7D
1200 x 800 x 200		1200 mm	800 mm		392 kg	190280025XD7D
1500 x 1000 x 200		1500 mm	1000 mm		554 kg	190280035XD7D
1500 x 1500 x 200		1500 mm	1500 mm		767 kg	190280050XD7D
2000 x 1000 x 200		2000 mm	1000 mm		699 kg	190280020XD7D
2000 x 1200 x 200		2000 mm	1200 mm		806 kg	190280060XD7D
2000 x 2000 x 200		2000 mm	2000 mm		1240 kg	190280045XD7D
2400 x 1200 x 200		2400 mm	1200 mm		947 kg	190280030XD7D
3000 x 1500 x 200		6000 kg	3000 mm		1500 mm	1425 kg
4000 x 2000 x 200	8000 kg	4000 mm	2000 mm	2384 kg	190280055XD7D	

## Professional Extreme 8.8 PLUS series, plasma nitrided – welding tables with surface hardness up to 850 Vickers!

- ▶ Professional Extreme PLUS with extra high side panel for particularly demanding applications. More options than ever before
- ▶ Construction reinforced by ribs
- ▶ Grid lines enable precise superstructures
- ▶ Thanks to the higher side panel and ribbing, the rigidity of the table top is improved and deformation under load is reduced
- ▶ Material thickness approx. 24.5 - 27 mm
- ▶ Bores Surface in diagonal grid
- ▶ Rounded corners, edges and drill holes

- ▶ Side panel, 3 rows of bores with 50 mm spacing, 2 rows with 100 mm spacing
- ▶ Including scaling on the surface



Professional Extreme 8.8 PLUS 1500x1000x300

Professional Extreme 8.8 PLUS made from through-hardened tool steel X8.8 plasma-nitrided

Model	Load capacity	Length approx.	Width approx.	Table height incl. feet	Weight approx.	Art. no.
Professional Extreme 8.8 PLUS						
1200 x 1200 x 300	2000 kg	1200 mm	1200 mm	850 mm	582 kg	190280015XD8PL
1500 x 1000 x 300		1500 mm	1000 mm		625 kg	190280035XD8PL
1500 x 1500 x 300		1500 mm	1500 mm		871 kg	190280050XD8PL
2000 x 1000 x 300		2000 mm	1000 mm		796 kg	190280020XD8PL
2400 x 1200 x 300		2400 mm	1200 mm		1072 kg	190280030XD8PL
3000 x 1500 x 300		3000 kg	3000 mm		1500 mm	1611 kg
4000 x 2000 x 300	4000 kg	4000 mm	2000 mm	2686 kg	190280055XD8PL	

1) For information on transport surcharges, see overleaf, details of transport and packaging costs TVZS within Germany plus VAT

## Hexagon 8.7 groove table series - plasma-nitrided tool steel with cross groove in hexagon shape

### The advantages of a welding table and grooved table combined

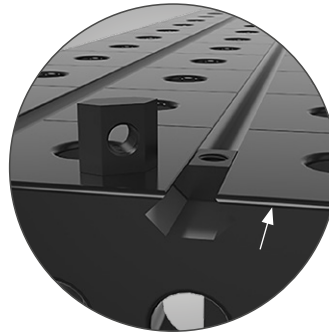
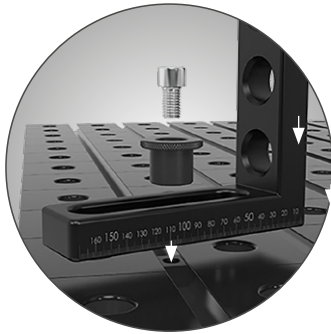
- ▶ Combines the advantages of a welding table with those of a grooving table in one product
- ▶ When fixing components, the Hexagon grooved table offers a wide range of clamping options and maximum flexibility

### Flexible clamping with many options

- ▶ In addition to fastening in the system holes, the grooves offer infinitely variable fixing of the clamping devices

### Compatible

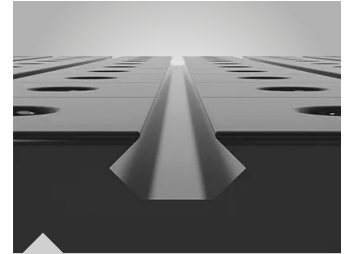
- ▶ All Siegmund System 28 accessories are compatible with the Hexagon grooved table. The popular Siegmund ST Box can also be easily attached (see p. 186)



28 mm

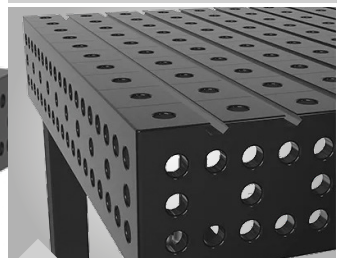


Plasma-nitrided  
with cross grooves



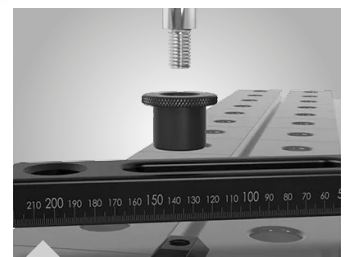
### Properties

- ▶ Bore Ø 28 mm
- ▶ with cross groove in hexagon shape
- ▶ Hexagon groove spacing 100 mm
- ▶ Surface holes 100 x 100 mm grid
- ▶ Side panel drill holes in diagonal grid pattern



### Material

- ▶ Tool steel X8.7 plasma nitrided
- ▶ Material thickness approx. 24.5 - 27 mm
- ▶ Side plate made of high-quality S355J2+N steel



### Advantages Hexagon Nut

- ▶ more favourable price and light weight
- ▶ Same load capacity as standard welding tables
- ▶ Working with threads up to M12 possible

See our capabilities for yourself and request a personal consultation!



Contact: +49 (0) 951 96 555-501  
beratung@schweisskraft.de

Hexagon groove table made from through-hardened tool steel X8.7 plasma-nitrided with cross grooves

Model	Load capacity	Length	Width	Table height incl. feet	Weight approx.	Art. no.
Hexagon grooved table 1200x1200x200	4000 kg	1200 mm	1200 mm	850 mm	500 kg	190280015HNK
Hexagon grooved table 1500x1000x200		1500 mm	1000 mm		531 kg	190280035HNK
Hexagon grooved table 1500x1500x200		1500 mm	1500 mm		734 kg	190280050HNK
Hexagon grooved table 2000x1000x200		2000 mm	1000 mm		668 kg	190280020HNK
Hexagon grooved table 2400x1200x200		2400 mm	1200 mm		920 kg	190280030HNK
Hexagon grooved table 3000x1500x200		3000 mm	1500 mm		1356 kg	190280040HNK
Hexagon grooved table 4000x2000x200		4000 mm	2000 mm		2262 kg	190280055HNK

## System 28

### Accessories for welding tables system 28 mm



Accessories Art. no.	Set 1 System 28 <sup>(1)</sup> 193283100	Set 2 System 28 <sup>(1)</sup> 193283200	Set 3 System 28 <sup>(1)</sup> 193283300	Set 4 System 28 <sup>(1)</sup> 193283400	Set 5 System 28 <sup>(1)</sup> 193283500
22 Ferrule nitrided	4 x	6 x	10 x	14 x	14 x
23 Clamp nitrided 45°/90°	2 x	4 x	6 x	10 x	10 x
24 Prism nitrided 135°	2 x	4 x	4 x	6 x	8 x
20 Bolt burnished 95 mm	12 x	18 x	24 x	30 x	36 x
21 Magnetic clamping bolt		4 x	4 x	8 x	8 x
8 Nitrided stop 150 mm	4 x	6 x	8 x	10 x	12 x
9 Nitrided stop 225 mm	4 x	6 x	8 x	10 x	12 x
10 Nitrided stop 500 mm				4 x	4 x
11 Nitrided angle 175 mm	2 x	4 x	6 x	8 x	12 x
13 Nitrided angle 300 mm	2 x	2 x	2 x	2 x	2 x
12 Nitrided angle 500 mm		2 x	2 x	2 x	2 x
16 + 17 Turning angle nitrided 500 mm				1 x + 1 X	1 x + 1 X
14 + 15 Nitrided angle 750 mm			1 x + 1 X	1 x + 1 X	1 x + 1 X
18 + 19 Nitrided angle 800 mm					1 x + 1 X
25 Tool trolley				1 x	1 x

\* Incl. eccentric, Allen key, brush, whetstone, Probe CleanBasic, Non-stick sample, torch holder

Options (ex works only)	Art. no.
Base basic equipment 750 instead of base basic equipment 650	193280857X
① Surcharge per height-adjustable foot 450-700	193280878XX
② Surcharge per height-adjustable foot 550-900	193280877XX
③ Surcharge per foot with swivel castor and parking brake	193280876XX
④ Surcharge per height-adjustable foot with swivel castor and parking brake 550-750	193280879XX
⑤ Surcharge per foot with floor anchoring	193280874XX

Accessories	Art. no.
⑥ Sub Table Box for System 28	1932809901
⑦ Eccentric stop Ø 60 mm with M10 thread - nitrided	193280402 N
⑧ Universal stop 150 L - nitrided	193280410 N
⑨ Universal stop 225 L - nitrided	193280420 N
⑩ Universal stop 500 S - nitrided	193280430 N

Stop and clamping angle	
⑪ 175 L - nitrided	193280110 N
⑫ 500 G - nitrided	193280162 N
⑬ 300 G - nitrided	193280152 N
⑭ 750 G left - nitrided	193280166 N
⑮ 750 G right - nitrided	193280167 N
⑯ 500 G with rotation angle left - cast / nitrided	193280164 N
⑰ 500 G with rotation angle right - cast / nitrided	193280165 N
⑱ 800 GK, left - nitrided	193280144 N
⑲ 800 GK, right - nitrided	193280146 N

⑳ Quick-release pin, short - burnished	193280510
㉑ Quick-release pin, short - burnished without groove	193280511
㉒ Magnetic clamping bolt 68 mm	193280740
㉓ Professional screw clamp - nitrided	193280610 N
㉔ Professional screw clamp 45°/90° - nitrided	193280630 N
㉕ Prism Ø 50 mm 135° with screwed-in collar - nitrided	1932806481 N
㉖ Tool trolley	193280910
㉗ Brush Ø 30 mm with protective cap	193280820
㉘ Torch holder - burnished	193280920
㉙ Allen key 6 mm	1932808521
㉚ Combination whetstone 200 x 50 x 25 mm	193000940

Stop and clamping angle	
⑳ 175 SL - nitrided	193280109 N
㉑ 300 GK, left - nitrided	193280124 N
㉒ 300 GK, right - nitrided	193280126 N
㉓ 500 GK, left - nitrided	193280130 N
㉔ 500 GK, right - nitrided	193280132 N

㉕ Table press	193280780
㉖ Non-stick with corrosion protection 1 litre in spray bottle	194000924
㉗ Surface tensioning countersunk bolt, double-burnished	193280595
㉘ Surface tensioning countersunk bolt, triple-burnished	1932805953
㉙ Surface tensioning countersunk bolt, quadruple-burnished	1932805954
㉚ Surface clamping bolt, double-burnished	193280590
㉛ Surface clamping bolt, quadruple-burnished	1932805904
㉜ Surface clamping bolt, triple-burnished	1932805903
㉝ Quick-release bolt without groove, triple-burnished	193280513
㉞ Vice 125 incl. fastening material incl. protective jaw set	193284320
Vice 125	193004320
Vice 150 incl. fastening material incl. protective jaw set	193284330
㉟ Protective jaw set 100	194004315
Protective jaw set 125	194004325
Protective jaw set 150	194004335
㊱ Hexagon standard slot nut - nitrided	193HN280547
㊲ Hexagon slot nut, rotatable - nitrided	193HN2805471
㊳ Hexagon slot nut, long - nitrided	193HN2805472
㊴ Adapter for screw clamps - nitrided	193HN280602
㊵ Clamping bush for M12 thread	1932805464
㊶ Hexagon grooved table accessory set	193HN28399

**Workbench** – stable work surface for various tasks such as metal and woodworking, repairs or assembly work

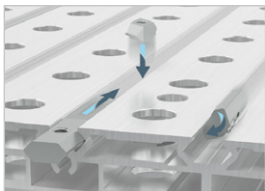
- ▶ Perforated plate made of high-quality steel S355J2+N with plasma nitriding
- ▶ Robust frame made of aluminium profiles
- ▶ Height adjustable
- ▶ Simple attachment of stops, clamping devices or vices
- ▶ Flexibility due to bore pattern
- ▶ Numerous accessories available



**Workbench  
1200 x 800 mm**



**Workbench 1200 x 1000  
Aluminium table profile**



**Aluminium table profile**  
Hexagon Nut System  
for additional  
clamping options

## Technical data

Model		Workbench 1200 x 800 mm	Workbench 1500 x 1000 mm	Workbench 1,200 x 700 mm	Workbench 1200 x 700 mm height-adjustable	Workbench 1200x1000 mm height-adjustable
Article no.		190161208	190161510	190161207L	190161207	190161210
Table height	mm	800 – 975		800	800 – 975	
Table legs		4	4	4	4	4
Load capacity approx.	kg	250	250	250	250	250
Table top (L x W)	mm	1200 x 800	1500 x 1,000	1200 x 700	1200 x 700	1200 x 1,000
Material		Steel S355J2+N, plasma-nitrided			Surface made of aluminium table profiles	
Bore diameter	mm	16	16		16	16
Bore spacing	mm	50	50	50	50	50
Material thickness	mm	12	12	24	24	24
Dimensions (L x W x H) approx.	mm	1200 x 800 x 800	1500 x 1000 x 800	1200 x 700 x 800	1200 x 700 x 800	1200 x 1000 x 800
Weight approx.	kg	108	158	39	39	50

## Accessory for workbench



Accessories	Art. no.
<b>① Tool set A</b>	
▶ 2 screw clamps	
▶ 6 quick-release bolts	194167320
▶ 4 stops	
▶ 1 Allen key	
<b>② Tool set B</b>	
▶ 4 screw clamps	
▶ 8 quick-release bolts	
▶ 6 stops	
▶ 2 Stop and clamping angle	194167340
▶ 1 Allen key	
▶ 1 x 100 mm vice	
③ Eccentric stop Ø 75 mm - nitrided	194160403 N
④ Flex stop 12 x 83 mm - aluminium	194160412
⑤ Universal stop 80 L - nitrided	193160410 N
⑥ Universal stop 115 L - nitrided	193160420 N
⑦ Angle setting template - nitrided	194160455 N
⑧ Stop and clamping bracket 50 L - nitrided	194160105 N
⑨ Stop and clamping angle 90 X - nitrided	193160108 N
⑩ Stop and clamping bracket 90 L - nitrided	193160110 N
⑪ Stop and clamping bracket 300 G - nitrided	193160162 N
⑫ Stop and clamping bracket 500 G - nitrided	194160164 N
⑬ Stop and clamping bracket 500 GK left - nitrided	193160134 N
⑭ Stop and clamping bracket 500 GK right - nitrided	193160136 N
⑮ Quick-release pin short - burnished	193160510
⑯ Ball stud flat short - burnished	194160522
⑰ Ball stud flat long - burnished	194160523
⑱ Countersunk bolt short - burnished	194160528
⑲ Staking bolt - burnished	194160540
⑳ Connecting bolt short - nitrided	194160560 N

Accessories	Art. no.
⑳ Magnetic clamping bolt 34 mm - aluminium	194160740
㉑ Professional screw clamp - burnished / nitrided	193160610
㉒ Professional screw clamp 45°/90° - burnished	193160630
㉓ Universal pipe screw clamp - burnished	194160604
㉔ Basic screw clamp - burnished	194160620
㉕ Prism for screw clamps - burnished / nitrided	194160656
㉖ Duo prism Ø 25 mm - burnished / nitrided	194160650
㉗ Vario prism Ø 50 mm 90°/120° with screwed-in collar - nitrided	1931606451 N
㉘ Reducing bush 28 mm -> 16 mm - burnished	194000546
㉙ Allen key 4 mm	193160852
㉚ Torch holder - burnished	193160920
㉛ Brush Ø 17 mm with protective cap	193160820
㉜ Combination whetstone 150 x 50 x 25 mm	193000942
㉝ CleanBasic 1 litre in spray bottle	194000914
㉞ CleanBasic 5 litres	194000915
㉟ Non-stick with corrosion protection 1 litre in spray bottle	194000924
㊱ Non-stick with corrosion protection 1 litre in pump bottle	194000929
㊲ Non-stick with corrosion protection 5 litres	194000926
㊳ Premium vice 100 mm	194004300
㊴ Quick-release bolt without groove, triple-burnished	194160513
㊵ Swivel rollers for workbench	1930041002
㊶ Aluminium table end profile 800	193160800
㊷ Vice 100 with 16 mm system holes	193004310
㊸ MDF protective panel 1200 x 700	19316004616
㊹ MDF protective panel 1200 x 800	19316004416
㊺ Hand-tightening bolt without groove, triple burnished	19316004365
㊻ Surface clamping bolt, triple burnished	19316003261