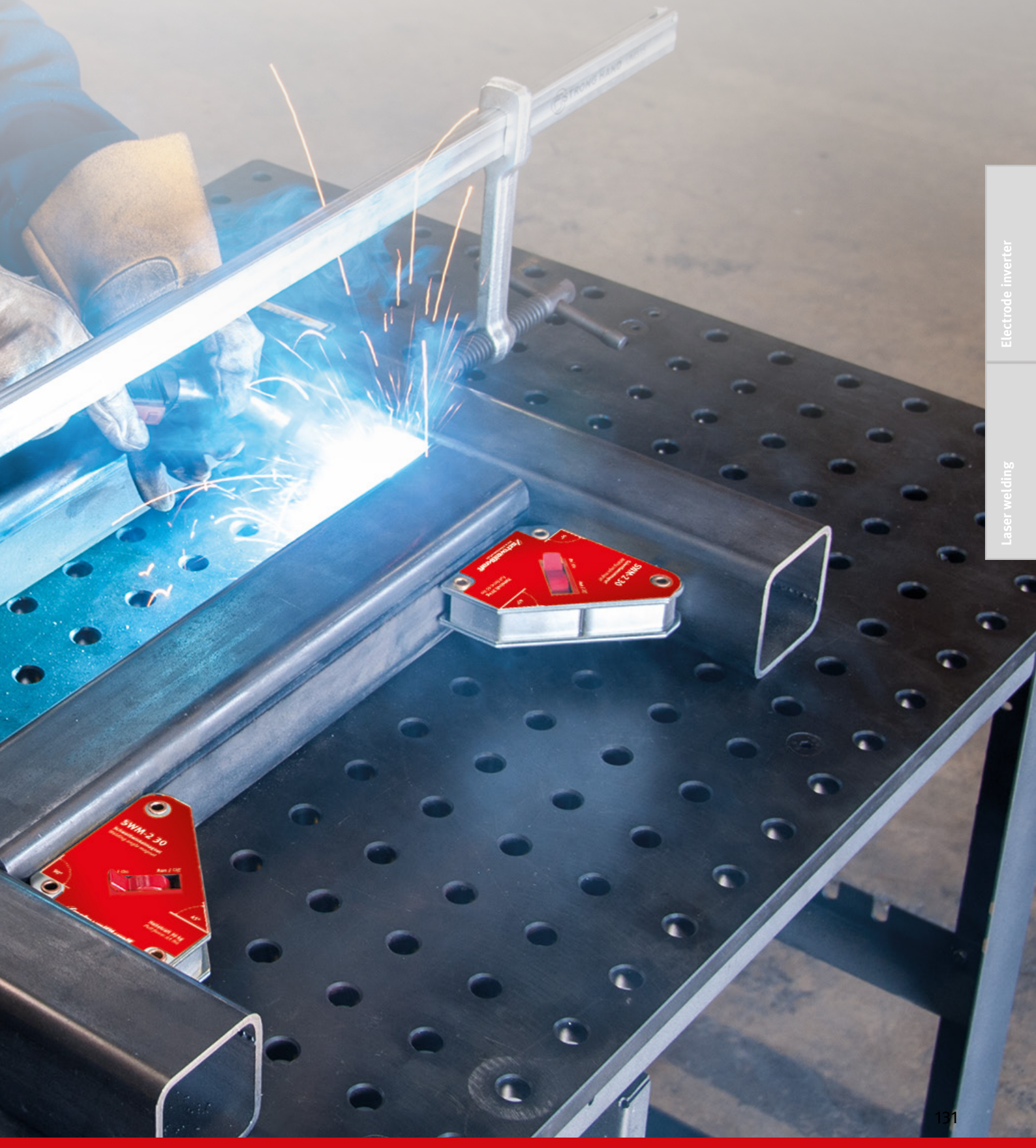




SCREW CLAMPS / WELDING MAGNETS



Electrode inverter

Laser welding

Screw clamps

USZ series - 4 - in - 1 all-steel screw clamp with toggle handle

- ▶ Tempered sliding and fixed clamp made from one piece for resilient and elastic clamping
- ▶ Fixed bracket and pressure plate made from one piece, tempered and torsion-resistant
- ▶ For clamping, tube tensioning, spreading and overlapping
- ▶ V-clamping attachment for pipes and an additional block for traversing included in the scope of delivery
- ▶ Surface-coated spindle with trapezoidal thread is smooth-running and does not jam.
- ▶ Best power transmission when tightening thanks to the rounded ends on the toggle handle
- ▶ Quick changeover of the sliding arm for spreading applications by reversing the clamping rail and the additional block
- ▶ Can be used on wood and steel



Standard incl. interchangeable V-clamping attachment and additional block for traversing and spreading

Accessories

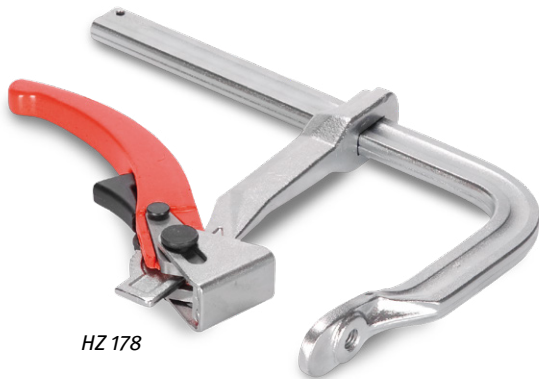


Magnetic V-clamping attachment

Article no. 1790006

HZ series - Lever clamp with ratchet mechanism for efficient and vibration-resistant clamping

- ▶ Fixed bracket and pressure plate made from one piece, tempered and torsion-resistant
- ▶ With 38 mm wide movable pressure plate
- ▶ Functional ratchet mechanism for vibration-proof clamping
- ▶ Particularly useful in cramped working conditions
- ▶ Quick conversion of the sliding bracket for spreading applications by



HZ 178

- reversing the clamping rail and the additional block in two steps.
- ▶ Up to five times faster than conventional clamps thanks to the one-finger quick clamping and release lever
- ▶ Can be used on wood and steel



HZ 178

HZ 254

Accessories



V-clamping attachment
Article no. 1790005

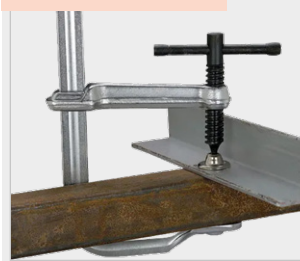


Magnetic V-clamping attachment
Article no. 1790006



Additional block for traversing and spreading
Art. no. 1790007

Clamping



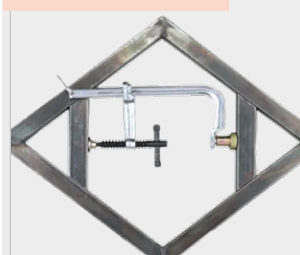
▶ Standard application efficient and easy to execute

Tubes clamping



▶ with the self-adjusting V-clamping attachment no problem

Spreading



▶ Quick changeover with just a few simple steps

Traversing



▶ Traversing by means of screw-on additional block

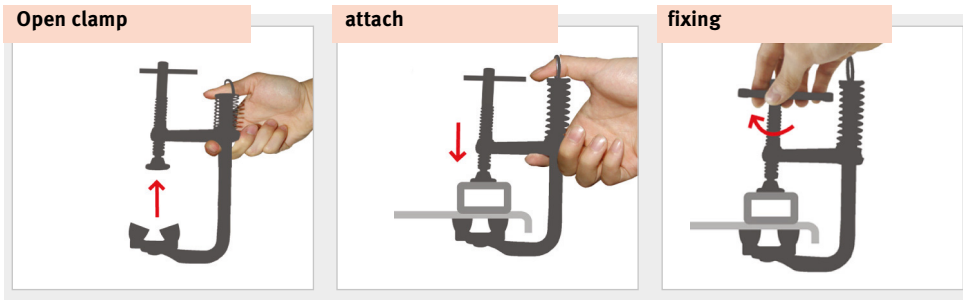
Model	max. clamping force	Span	Throat depth	Cross-section of fixed bracket	Thread	Weight approx.	Art. no.
USZ 216	550 kg	216 mm	121 mm	24 x 12 mm	M 10	1.9 kg	1790001
USZ 318	1100 kg	318 mm	140 mm	30 x 14 mm	M 10	3.5 kg	1790002
USZ 419	1100 kg	419 mm	140 mm	30 x 14 mm	M 10	4.0 kg	1790003
HZ 178	460 kg	178 mm	121 mm	22 x 11 mm	M 10	1.2 kg	1790010
HZ 254	460 kg	254 mm	121 mm	22 x 11 mm	M 10	1.3 kg	1790011

MSZ series - Magnetic screw clamp with quick-release spring and magnetic V-clamping attachment

- ▶ For steel workpieces
- ▶ Spring-loaded sliding arm for one-handed operation
- ▶ After positioning, the clamp holds magnetically to the workpiece
- ▶ Made of heat-treated and nickel-chromium-plated steel for long durability
- ▶ V-clamping attachment included in the scope of delivery
- ▶ With threaded hole, can be extended with optional V-clamping attachment or bolt



Simple one-handed operation in three steps:



Accessories

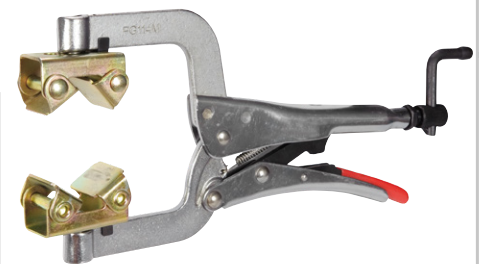
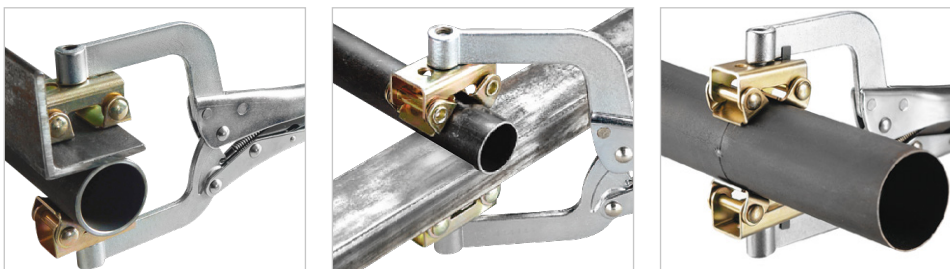


Additional block for traversing
suitable for MSZ 140
Art. no. 1790022

suitable for RGZ 280
Art. no. 1790007

RGZ 280 – Pipe grip pliers specially designed for holding round objects

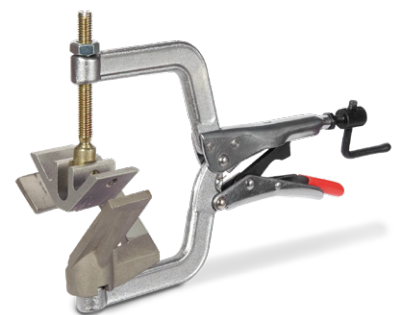
- ▶ with two self-adjusting V-clamps, therefore also suitable for securing flat material to pipes
- ▶ operable with one hand



RGZ 280 - illustration shows scope of delivery, optionally available additional block for traversing see accessories above

WGZ 76 – Angle gripping tong - the helping hand for working with right-angled workpieces

- ▶ For holding, aligning and fixing workpieces of different thicknesses at a 90° angle
- ▶ operable with one hand
- ▶ Applicable for wood and steel and synthetic materials



WGZ 76 - Fig. shows scope of delivery

▶ For fixing right-angled connections

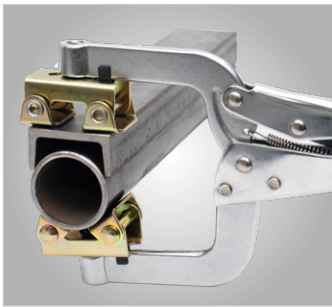
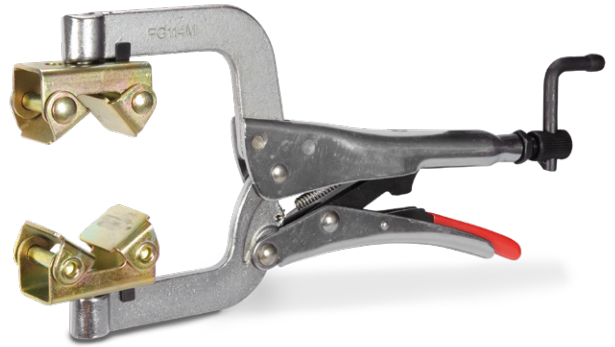
▶ Also for working with wood and synthetic materials

▶ for workpieces up to 1 1/4 inch (32 mm) thickness (D)

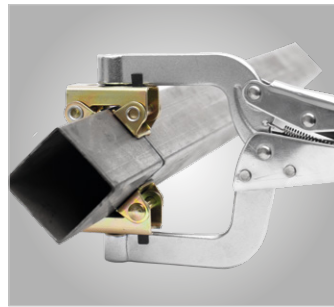
Model	max. clamping force	Span	Throat depth	Cross section	Thread	Weight approx.	Art. no.
MSZ 90	140 kg	90 mm	64 mm	13 x 6 mm	M 6	0.4 kg	1790020
MSZ 140	230 kg	140 mm	89 mm	16 x 8 mm	M 8	0.5 kg	1790021
Model		Span min./max.		Length	Thread	Weight approx.	Art. no.
RGZ 280		40 - 64 mm		280 mm	M 10	1.3 kg	1790090
Model	max. clamping force	Span	Throat depth	Length		Weight approx.	Art. no.
WGZ 76	75 kg	32 mm	76 mm	216 mm	-	0.6 kg	1790080

Pipe grip pliers RGZ 150 - Convenient way to attach round or square pipes for butt welding

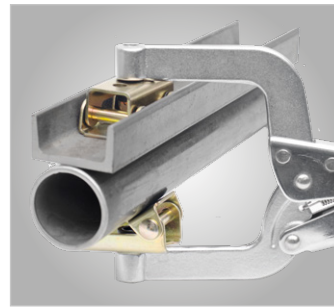
- ▶ The large opening allows the pipe wrench to be used up to a diameter of 63.5 mm
- ▶ The two V-pads offer a better clamping surface
- ▶ Adjustable upper spindle for holding pipes of different sizes
- ▶ Ergonomic one-hand release lever that does not pinch
- ▶ Quick-clamping crank for adjusting the clamping pressure without loosening the workpiece



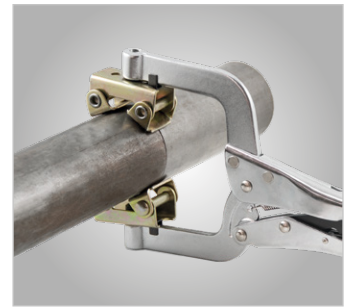
• The V-pads of the pipe wrench adapt to many different shapes



• For holding two square tubes together



• The V-pads can be rotated 360°



• For holding two round-edged tubes together

Model		RGZ 150
Article no.		1790093
Span min.	mm	25
Span max.	mm	50

Throat depth	mm	50
Thread		M8
Dimensions and weights		
Length (product) approx.	mm	180
Weight (net) approx.	kg	0.4

Ground screw clamp MSZ 80 - With quick-release spring and insulated U-adapter

- ▶ Solid, insulated copper U-adapter can be rotated for easy access
- ▶ For fastening to round/irregularly shaped parts
- ▶ Clamping and earthing at the same time
- ▶ Designed for up to 300A
- ▶ With spring-loaded sliding bracket
- ▶ Made of heat-treated and nickel-chromium-plated steel for long durability



• For fastening to round/irregularly shaped parts
• Clamping and earthing at the same time

Model		MSZ 80
Article no.		1790079
Span	mm	75
Throat depth	mm	64
Clamping force max.	kg	100

Thread		M6
Amperage	A	300
Dimensions and weights		
Length (product) approx.	mm	180
Weight (net) approx.	kg	0.4

UGZ series - Universal gripping tongs

- ▶ Crank handle for quick opening, closing and adjustment
- ▶ With quick-release lever
- ▶ Serrated tong jaws for additional grip

- ▶ With hammer head and longitudinal groove in the upper jaw
- ▶ Brazed components with high durability

UGZ 75

- ▶ Large tong projection (64 mm)
- ▶ V-shaped notch in the upper jaw for clamping small parts

UGZ 40



UGZ 40



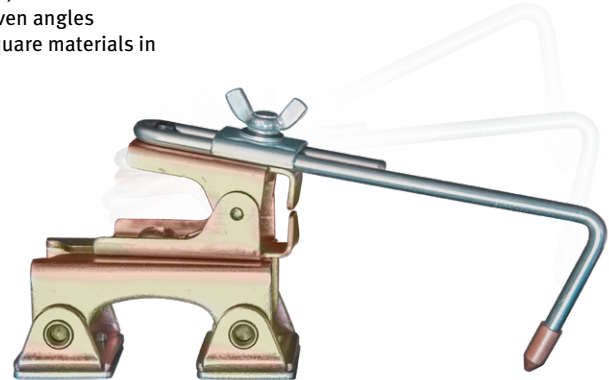
UGZ 75

Model	Throat depth	Opening area	Tool length	Weight approx.	Art. no.
UGZ 40	–	40 mm	300 mm	0.6 kg	1790091
UGZ 75	64 mm	6 ~ 75 mm	250 mm	0.7 kg	1790092

MHS 203 - Material retaining stop

- ▶ For holding, positioning and processing of steel workpieces
- ▶ Retaining finger with brass tip 360° and adjustable in length

- ▶ Particularly suitable for bolts, nuts or thin sheets for tack welds at uneven angles
- ▶ For use on round, flat and square materials in the light load range



Model	Holding force ⁽¹⁾	Dimensions approx.	Weight approx.	Art. no.
MHS 203	15 kg	178 x 102 x 102 mm	0.55 kg	1790077

(1) Holding force based on application with 10 mm steel plate

BHW 100 – TIG torch holder

- ▶ The welding torch can be placed wherever it is needed
- ▶ Adjustable cable holder

- ▶ The fully enclosed magnetic base plate makes it easier to clean metal residues

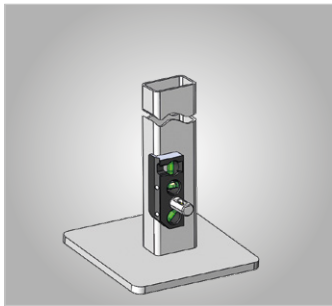


Model	Dimensions approx.	Weight approx.	Art. no.
BHW 100	Ø89 x 160 mm	0.85 kg	1790078

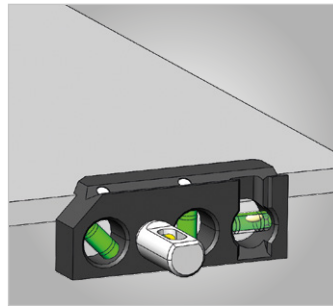
Spirit level

Three-axis spirit level SWL 3

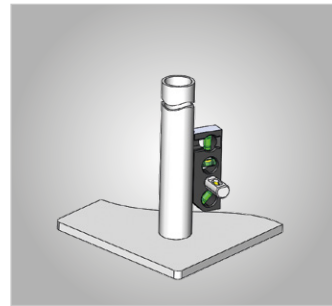
- ▶ Precise, CNC-machined spirit level
- ▶ Three built-in jumbo spirit levels and one clip-on spirit level
- ▶ The large clip-on spirit level can be rotated to facilitate viewing from different angles
- ▶ Large, machined guide edge for easy alignment of large parts
- ▶ The clip-on spirit level allows you to check the level in two axes simultaneously
- ▶ Housing made of anodised aluminium
- ▶ Relief for easy reading
- ▶ Eleven large and strong rare earth magnets on four sides, including the V-side



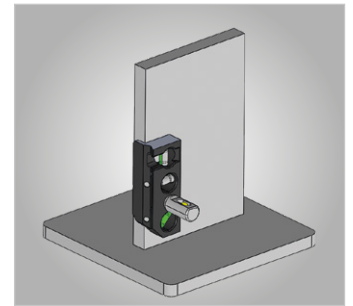
• Square tube



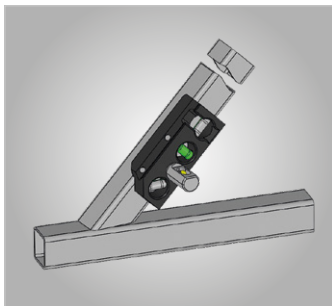
• Edge of a panel in a structure



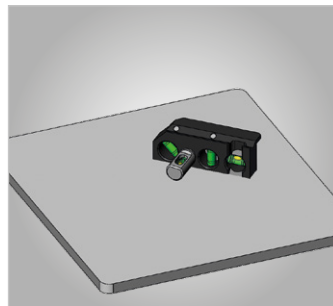
• Round tube



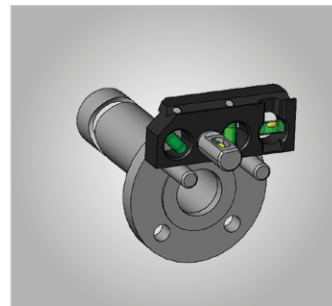
• Vertical structural edge



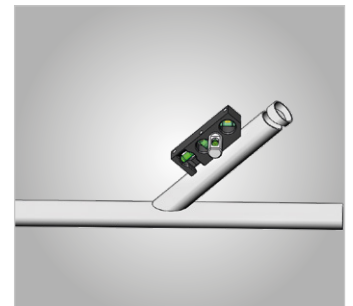
• 45° square structure



• Table top



• Flange



• 45° structure

Model		SWL 3
Article no.		1790097

Dimensions and weights		
Length (product) approx.	mm	152
Width/depth (product) approx.	mm	45
Height (product) approx.	mm	55
Weight (net) approx.	kg	0.5

Scope of delivery

- ▶ Attachable spirit level

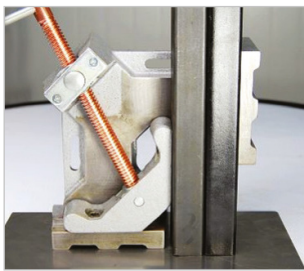
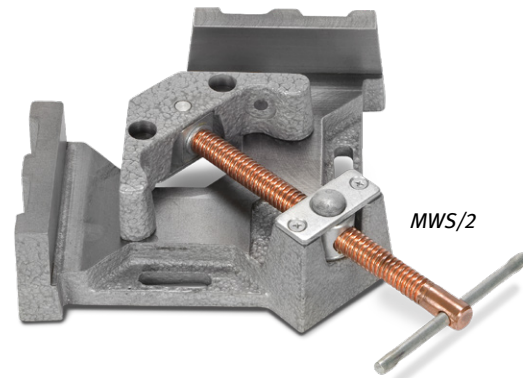


MWS series - Metal angle clamp in 2-axis or 3-axis design

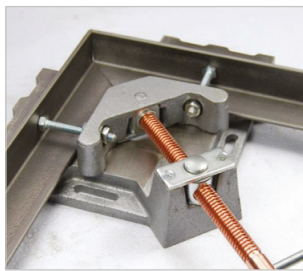
- ▶ For use in steel construction, welding and metalworking
- ▶ Sturdy jaws and base body made of grey cast iron
- ▶ For holding, aligning and fixing workpieces of varying thicknesses at a precise 90° angle
- ▶ Automatic adjustment of the pressure jaw to workpieces of different thicknesses thanks to the articulated spindle nut
- ▶ with push button for quick clamping of the workpiece (except for MWS-2 56)
- ▶ Welding spatter cannot adhere to the copper-plated trapezoidal spindle with T-handle
- ▶ Easy to attach to welding or machine tables thanks to elongated holes on the sides

MWS-2 series

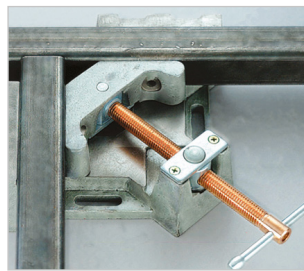
- ▶ For workpieces with two axes
- ▶ Due to the open design, fixing of T-joints and free access to the workpiece during welding and assembly work is possible



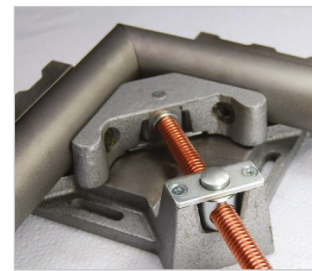
▶ Milled sides for setting up the metal angle clamps



▶ With device for better clamping of profiles



▶ Fixing of T-connections possible due to open construction method



▶ Also suitable for fixing round material

Series MWS-3

- ▶ For workpieces with three axes
- ▶ Quick removal of the workpiece by simply turning the second clamping arm away



▶ With quick clamping for fast, convenient set-up



▶ The second clamping arm can simply be swivelled away

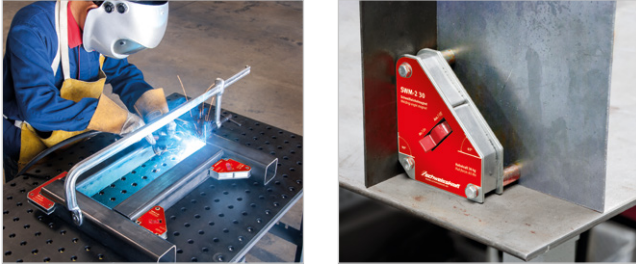


Model	Span	Jaws length/height	T-distance	Fastening groove		Weight approx.	Art. no.
				Length	Width		
MWS-2 56	56 mm	90 x 33 mm	47 mm	35.5 mm	11 mm	4.0 kg	1790099
MWS-2 95	95 mm	122 x 35 mm	62 mm	40 mm	11 mm	5.0 kg	1790100
MWS-2 121	121 mm	135 x 64 mm	100 mm	51 mm	11 mm	10.6 kg	1790101
MWS-3 95	95 mm	122 x 35 mm	62 mm	-	-	11.1 kg	1790102
MWS-3 121	121 mm	100 x 64 mm	100 mm	-	-	19.6 kg	1790103

Welding angle magnets

SWM-2 30 – Switchable welding angle magnet for fixing sheet metal, round and square workpieces or pipes

- ▶ With high magnetic holding force for versatile applications
- ▶ Magnet can be switched on and off via toggle switch
- ▶ Easy to wipe off when switched off



For holding metal workpieces at a 45° or 90° angle



Model	Holding force ⁽¹⁾	Angle	Dimensions approx.	Weight approx.	Art. no.
SWM-2 30	30 kg	45° / 90°	110 x 95 x 25 mm	0.5 kg	1790029

(1) Holding force based on application with 9.5 mm steel plate

VSWM 15 – Adjustable welding angle magnet for stepless adjustment of the angle from 30° to 270°

- ▶ With high magnetic holding force for versatile applications
- ▶ Ideal for round and square pipes, angles and flat material
- ▶ Desired angle between 30° and 270° easily adjustable via hexagonal hole
- ▶ Fastening holes to connect two magnets together



Add an Allen key to the scope of delivery

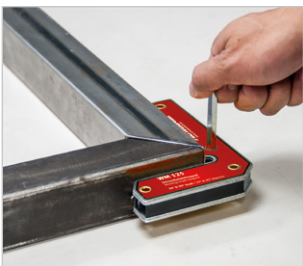


Model	Holding force ⁽¹⁾	Angle	Dimensions approx.	Weight approx.	Art. no.
VSWM 15	15 kg	30° – 270° stepless	156 x 156 x 20 mm	0.9 kg	1790051

(1) Holding force based on application with 10 mm steel plate

WM 125 – Two internal and external angle magnets for 90° and 270° angles

- ▶ With high magnetic holding force for versatile applications
- ▶ Ideal for round and square pipes, angles and flat material
- ▶ Fastening holes to connect two magnets together



Hexagonal hole for detaching the magnetic bracket.
Hexagon socket key not included in delivery

Scope of delivery WM 125:

- 1 angle magnet up to 9 kg holding force
- 1 angle magnet up to 15 kg holding force

Model	Holding force ⁽¹⁾	Angle	Dimensions approx.	Weight approx.	Art. no.
WM 125	9 kg 15 kg	90° / 270°	75.5 x 52 x 14 mm 125 x 85 x 18 mm	0.5 kg	1790042

(1) Holding force based on application with 10 mm steel plate



SWM-2 and SWM series – Switchable welding angle magnets for fixing sheet metal, round and square workpieces or pipes

- ▶ With high magnetic holding force for professional applications
- ▶ Magnet can be switched on and off via toggle switch
- ▶ Easy to wipe off when switched off
- ▶ Ideal for round and square pipes, angles and flat material

Series SWM-2



For holding metal workpieces at a 45° or 90° angle



SWM-2 35

SWM-2 65

SWM series

- ▶ For holding metal workpieces at a 90° angle
- ▶ Pole shoes with prism, therefore suitable for flat and round material



Professional design for the highest quality standards

Two independently functioning on/off switches



SWM 35

SWM 70

VSWM 41 – Adjustable welding angle magnet for stepless adjustment of the angle from 30° to 275°

- ▶ With high magnetic holding force for professional applications
- ▶ Pole shoes with prism, therefore suitable for flat and round material
- ▶ Conveniently adjustable to the desired angle and easy to fix with the practical lever



• Angle can be easily read off the scale

WM 90 – Angle magnet

- ▶ For creating 90° angles on the outside to enable obstacle-free welding on the inside
- ▶ Outer magnetic edges can be used for 60° material inclinations



Scope of delivery WM 90:
• 2 angle magnets each

Model	Holding force ⁽¹⁾	Angle	Dimensions approx.	Weight approx.	Art. no.
SWM-2 35	40 kg	45° / 90°	111 x 95 x 29 mm	0.7 kg	1790030
SWM-2 65	75 kg	45° / 90°	152 x 130 x 35 mm	1.4 kg	1790031
SWM 35	55 kg	90°	152 x 152 x 38 mm	1.2 kg	1790040
SWM 70	120 kg	90°	197 x 197 x 48 mm	2.7 kg	1790041
VSWM 41	50 kg	30°- 275° stepless	197 x 197 x 95 mm	2.4 kg	1790050
WM 90	14 kg	60°/90°	83 x 95 x 16 mm	0.2 kg	1790071

(1) Holding force based on application with 10 mm steel plate

Welding angle magnets

Switchable welding angle magnet SWM-4 65 – for fixing sheet metal, round and square workpieces or pipes

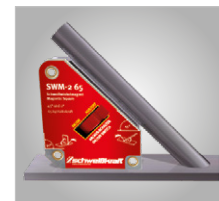
- ▶ With high magnetic holding force for professional applications
- ▶ Strong rare earth magnets
- ▶ Double plate for full magnetic force
- ▶ Magnet can be switched on and off via toggle switch
- ▶ Centre position of the on/off switch ideal for alignment and easy placement of parts
- ▶ Easy to wipe off when switched off
- ▶ Ideal for round and square pipes, angles and flat material
- ▶ For holding metal workpieces at different angles



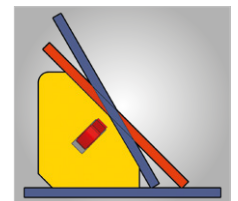
Model		SWM-4 65
Article no.		1790032
Holding force	kg	65
Angle	°	30 / 45 / 60 / 90
Dimensions and weights		
Length (product) approx.	mm	150
Width/depth (product) approx.	mm	130
Height (product) approx.	mm	35
Weight (net) approx.	kg	1.4



• For holding metal workpieces at a 90° angle



• For holding metal workpieces at a 45° angle

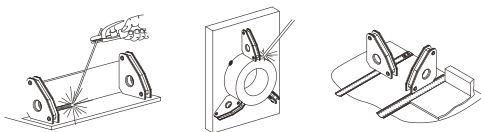


• For holding metal workpieces at a 30° or 60° angle

Series MSWM / SSWM - Permanent welding angle magnet

For 30°, 45°, 60° and 90° mounting bracket

- ▶ For holding round and flat iron workpieces at an exact angle
- ▶ Practical helpers for welding and assembly



MSWM 10
 ▶ Particularly suitable for small workpieces
 ▶ Two welding magnets included in the scope of delivery



SSWM 20
 ▶ Despite small design 40 kg holding force
 ▶ For the most common applications
 ▶ One welding magnet included in delivery

Model	Holding force ⁽¹⁾	Angle	Dimensions approx.	Weight approx.	Art. no.
MSWM 10	10 kg	30°/60°/45° /90°	59 x 51 x 16 mm	0.3 kg	1790060
SSWM 20	40 kg	30°/60°/45° /90°	140 x 111 x 19 mm	0.5 kg	1790070

(1) Holding force based on application with 10 mm steel plate

Series MM - Mass magnets compact, with up to 50 kg holding force

- ▶ V-shaped support for a secure hold on round and flat material surfaces
- ▶ Easy operation of the on/off switch, even when wearing gloves
- ▶ Metal chips fall off immediately after the solenoid is switched off
- ▶ Cable rotation up to 360° possible



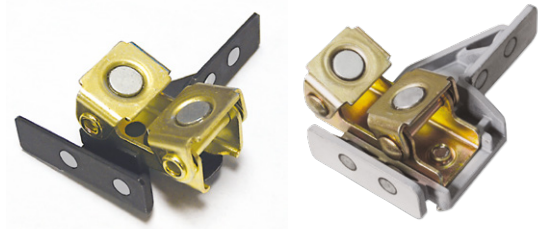
Model	Amperage	Duty cycle	Holding force	Dimensions approx.	Weight approx.	Art. no.
MM 300	300 A	60%	20 kg	50 x 50 x 64 mm	0.4 kg	1790072
MM 500	500 A	60%	50 kg	50 x 70 x 64 mm	1.1 kg	1790073

MHA series - Magnetic holding stops

For positioning small workpieces during tack welding

- ▶ For use on metal profiles such as round materials, flat steel or square tubes
- ▶ MHA 111 made of die-cast aluminium for more precise work
- ▶ Adjustable stops

position and secure the workpiece vertically or horizontally.



MHA 100 -

Fig. shows scope of delivery

MHA 111 -

Fig. shows scope of delivery

Model	Holding force ⁽¹⁾	Dimensions approx.	Weight approx.	Art. no.
MHA 100	8.0 kg	100 x 76 x 32 mm	0.2 kg	1790074
MHA 111	8.0 kg	111 x 73 x 38 mm	0.25 kg	1790075

MVS SET- Magnetic V-clamping attachments

For holding, positioning and processing of steel workpieces

- ▶ For use on round, flat and square materials in the light load range
- ▶ Four magnets per clamping attachment

Scope of delivery:

- ▶ Two clamping attachments, L x W: 55 x 39 mm, holding force 8 kg
- ▶ Two clamping attachments, L x W: 50 x 26 mm, holding force 6 kg

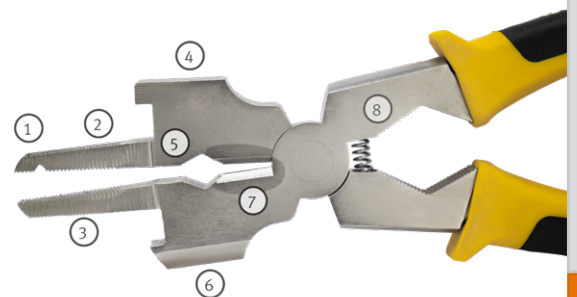


Model	Art. no.
MVS Set	1790076

(1) Holding force based on application with 10 mm steel plate

Multi welding tong MS 215 - Multifunctional, unique tong

- ▶ Side with slag hammer for removing slag and welding residues
- ▶ Flat hammer with scraper for quick removal of splashes
- ▶ With induction-hardened blades, chisel blades and scraping knives



Model	MS 215	
Article no.	1790095	
Dimensions and weights		
Length (product) approx.	mm	215
Weight (net) approx.	kg	0.5

1. V-groove for wire or nuts
2. Coarse file
3. Fine file
4. Flat hammer
5. Grip
6. Chisel blades
7. Side cutter
8. Grip