

AUTOMOTIVE SUPPLIES



Car manoeuvring aids and ramps

Car trolley PRW 450

- ▶ Power-saving shifting, even of damaged, locked or blocked vehicles
- ▶ For sideways movements or turning on the spot
- ▶ With rollers for optimum manoeuvring in confined spaces such as car dealerships or workshops

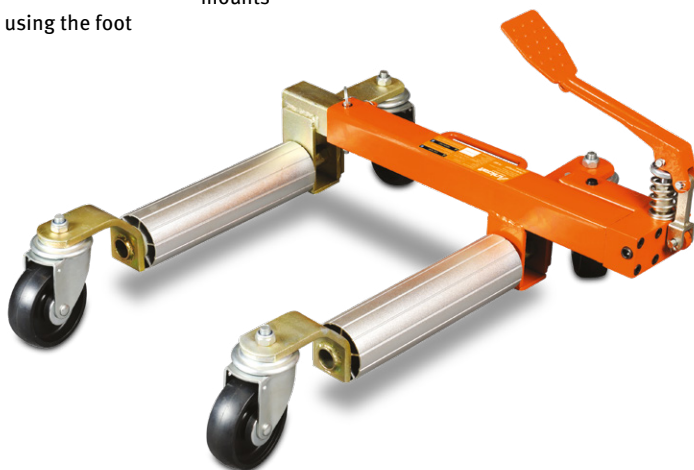
Scope of delivery:
▶ Two trolleys



Model		PRW 450
Art. no.		6201599
Technical data		
Load capacity per pair	kg	900
Dimensions individually (L x W x H) approx.	mm	602 x 385 x 140
Weight approx. individually	kg	9

Hydraulic manoeuvring aid PV 681 - for cars

- ▶ For manoeuvring cars in confined spaces
- ▶ Two manoeuvring aids for turning the car around one axis; four manoeuvring aids for completely free movement
- ▶ Convenient lifting of the vehicle using the foot pedal
- ▶ For use on even floors indoors
- ▶ With rollers for optimum manoeuvrability even in confined spaces
- ▶ Sturdy steel construction, aluminium wheel mounts



Application example

Model		PV 681
Art. no.		6201602
Technical data		
Load capacity (upper position)	kg	680
Underride height	mm	150
Roller diameter	mm	90
max. tyre width	mm	270
Wheel centre distance	mm	340-620
Distance inside wheel mounting spars	mm	270-550
Floor clearance wheel mounting spar bottom-top	mm	36-106
Weight approx.	kg	18



Accessories	Art. no.
Storage rack	6201603

Car ramps, KR series – Practical, easy to use for greater safety when working on and under the vehicle.

KR 2000

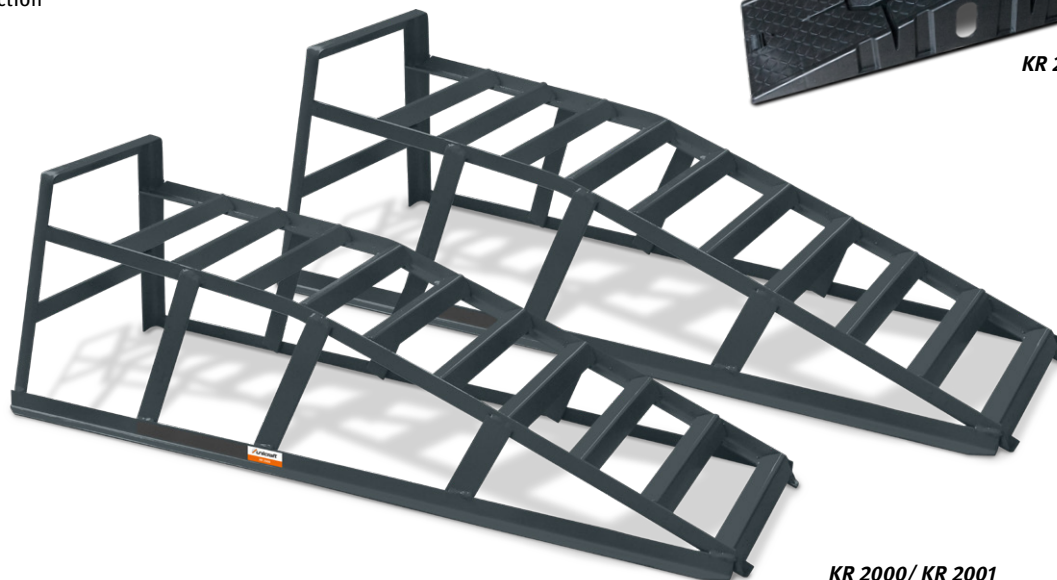
- ▶ Stable design
- ▶ Robust welded steel construction
- ▶ Drive-on width up to 185 mm

KR 2001

- ▶ Stable design
- ▶ Robust welded steel construction
- ▶ Drive-on width up to 225 mm

KR 2500

- ▶ Stackable to save space
- ▶ Plastic car ramp
- ▶ With particularly large drive-on width (240 mm)



Model		KR 2000	KR 2001	KR 2500
Art. no.		6202000	6202001	6202005
Technical data				
Load capacity	t	2/pair	2/pair	2.5/pair
Tyre width max.	mm	185	225	240
Dimensions (L x W x H) approx.	mm	830 x 310 x 270	910 x 360 x 270	900 x 295 x 220
Weight approx.	kg	5.5/ piece	7.9/ piece	4/ piece
Scope of delivery		2 pcs.	2 pcs.	2 pcs.

Jack stands, series UB

- ▶ For protection when working under the raised vehicle
- ▶ Robust welded construction with V-stamp
- ▶ Wide levelling feet: gentle on workshop floors, asphalt or other surfaces

Scope of delivery:
▶ 2 jack stands



Model		UB 3000	UB 6000
Art. no.		6201300	6201301
Technical data			
Load capacity	t/Bock	3	6
Min. height	mm	276	388
Max. height	mm	420	580
Grid steps		10	12
Floor space	mm	201 x 182	285 x 250
Weight approx.	kg/pair	6.4	13.8

Jack stands, series UBK – foldable

- ▶ For protection when working under the raised vehicle
- ▶ Wide levelling feet: gentle on the floor

Scope of delivery:
▶ 2 jack stands



Model		UBK 3000
Art. no.		6201305
Technical data		
Load capacity	t/Bock	3
Min. height	mm	285
Max. height	mm	400
Grid steps		4
Floor space	mm	240 x 240
Weight approx.	kg/pair	4

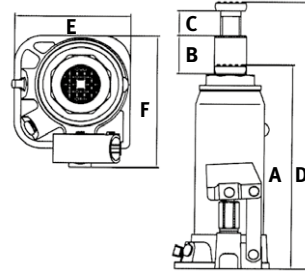
Hydraulic bottle jacks

Hydraulic bottle jack HSWH - Car lift with extremely resilient cylinder

- ▶ Extremely stable and resistant to tipping due to large base plate made of special casting
- ▶ Smooth-running, two-piece pump rocker arm with fit for valve control
- ▶ Particularly robust thanks to reinforced walls, stable and durable
- ▶ Very low base height
- ▶ Unscrewable plunger for additional height adjustment
- ▶ Stamp plate ribbed for secure support

Model		HSWH 30	HSWH 50
Art. no.		6200003	6200005

Technical data			
Load capacity	t	3	5
Height min (A)	mm	188	207
Lift height (D) approx.	mm	363	402
Stroke (B) approx.	mm	115	125
Fitting height (C) approx.	mm	60	70
Shelf space (E x F) approx.	mm	108.5 x 87	117 x 97
Weight approx.	kg	2.8	3.7



Hydraulic bottle jack, series HSWH TOP

- ▶ Swivelling lifting column, tilt-resistant base plate
- ▶ Rotatable pump tilt lever that can be operated from any position
- ▶ Particularly durable due to reinforced walls
- ▶ High-quality weld seams and screw connections
- ▶ Extension screw provides additional lifting height
- ▶ Stop protection prevents the plunger from blocking
- ▶ Safety valves to prevent overloading of the cylinder and unintentional adjustment



> 2-way extendable telescopic pump handle



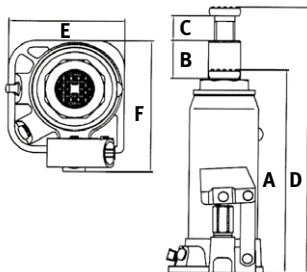
> From HSWH 20 TOP: Rotatable carrying handle



> The lifters can also be used horizontally



> Rotatable pump tilt lever that can be operated from any position



Scope of delivery:

- > Pump lever
- > Carrying handle (HSWH 20 TOP & HSWH 30 TOP)

Model		HSWH 5 TOP	HSWH 10 TOP	HSWH 20 TOP	HSWH 30 TOP
Art. no.		6211005	6211010	6211020	6211030

Technical data					
Load capacity	t	5	10	20	30
Min. height (A)	mm	212	219	234	242
Lift height (D)	mm	437	444	459	467
Stroke (B)	mm	150	150	150	150
Fitting height (C) approx.	mm	75	75	75	75
Shelf space (E x F) approx.	mm	125 x 75	144 x 90	172 x 120	196 x 144
Weight approx.	kg	4.5	6.4	10.6	15.5

RWH - Trolley jack

- ▶ Cast iron load and swivel rollers

RWH 2.51

- ▶ Attachment piece for extending of the saddle included
- ▶ QUICK LIFT function: with only one stroke at the attachment point of the vehicle



RWH 2.1



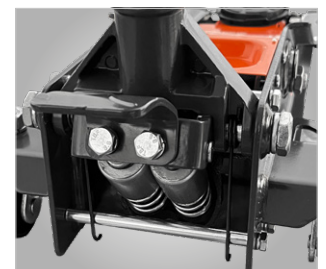
QUICK LIFT function
RWH 2.51 Extendable saddle makes work easier on the vehicle

RWH 2.51

Model		RWH 2.1	RWH 2.51
Art. no.		6201099	6201128
Load capacity	t	2	2.5
Underride height min.	mm	135	150
Final height max.	mm	340	530
Dimensions (L x W x H) approx.	mm	447 x 196 x 135	625 x 242 x 158
Weight approx.	kg	8.7	18.7

SRWH 2501 EF/ SRWH 3003 EF – Trolley jack as extra-flat version especially for lowered and sporty flat vehicles

- ▶ Two-part pump lever with ergonomic handle ensures a firm grip and easy handling
- ▶ Cast iron load and swivel rollers
- ▶ Valve control via rotating pump lever
- ▶ With double piston, so fewer pumping operations up to the maximum final height necessary
- ▶ Quick-lift foot pedal for fast bridging of the empty stroke
- ▶ Practical tool tray
- ▶ Extra wide surface of the support plate with rubber pad



› Quick-Lift function with double piston



SRWH 2501 EF

SRWH 3003 EF



› Extra wide surface of the support plate with rubber pad



› Practical tool tray
› Quick-lift foot pedal for fast bridging of the empty stroke

Model		SRWH 2501 EF	SRWH 3003 EF
Art. no.		6201129	6201124
Load capacity	t	2.5	3
Stroke max.	mm	410	420
Underride height min.	mm	85	78
Final height max.	mm	495	510
Width inside / outside	mm	233 / 343	262 / 344
Length max.	mm	1695	1810
Dimensions (L x W x H) approx.	mm	660 x 343 x 221	685 x 344 x 223
Weight approx.	kg	28.2	33

Accessory	Art. no.
Cross member	6201139

Trolley jacks

SRWH 3000 QL – Special trolley jack with QUICK-LIFT function

- ▶ Two-part pump lever with rubber grip for safe and easy lifting of the load
- ▶ Valve control via rotating pump lever
- ▶ Cast iron load and swivel rollers
- ▶ Extra wide surface of the support plate



Model		SRWH 3000 QL
Art. no.		6201103
Load capacity	t	3
Lifting height max.	mm	355
Underride height min.	mm	145
Underride height max.	mm	180
Final height max.	mm	500
Dimensions (L x W x H) approx.	mm	685 x 346 x 180
Weight approx.	kg	37.2



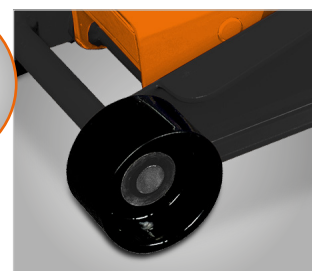
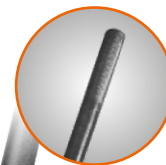
› Quick-Lift function with double piston



› with just one stroke using the foot lever at the vehicle's attachment point

SRWH 3001 SIL - Special manoeuvring jack

- ▶ With extra low saddle profile good for lowered cars
- ▶ Easy lifting up to the attachment point by foot lever or hand lever
- ▶ Slow, safe lowering when loaded
- ▶ Practical integrated tool tray with rubber mat
- ▶ Large support disc with rubber pad for gentle support, protects lifting point and vehicle



› Equipped with polyurethane rollers, floor-friendly and quiet

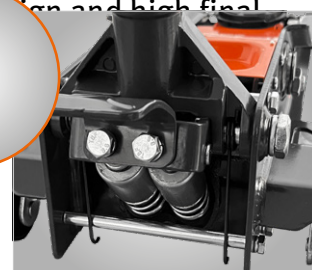
Model		SRWH 3001 SIL
Art. no.		6201121
Load capacity	t	3.0
Lifting height max.	mm	340
Underride height min.	mm	120
Underride height max.	mm	158
Final height max.	mm	460
Dimensions (L x W x H) approx.	mm	628 x 343 x 158
Weight approx.	kg	30.5



Accessory	Art. no.
Cross member	6201139

SRWH 2500 LFH / SRWH 3000 LFH – Special trolley jack with double piston and high final height

- ▶ Extra low saddle profile - good for lowered cars
- ▶ The extra-long design makes it particularly suitable for long frames
- ▶ Double piston; therefore fewer pumping operations up to the max. final height
- ▶ Slow, safe lowering when loaded
- ▶ Large support plate with rubber attachment for gentle support protects the lifting point and vehicle



› Quick-Lift function with double piston

Model		SRWH 2500 LFH	SRWH 3000 LFH
Art. no.		6201126	6201127
Load capacity	t	2.5	3
Lifting height max.	mm	425	470
Underride height min.	mm	75	110
Final height max.	mm	500	580
Dimensions (L x W x H) approx.	mm	685 x 344 x 150	805 x 355 x 172
Weight approx.	kg	32.4	48.5



SRWH 3000 LFH

Accessory	Art. no.
Cross member	6201139

SRWH 2000 LF DS – Special trolley jack with particularly flat design

- ▶ With sturdy, cylindrical PU roller tyres for particularly smooth running
- ▶ Extra flat, suitable for lowered cars
- ▶ Valve control via internal linkage and rotary knob in the pump lever
- ▶ Slow, safe lowering when loaded
- ▶ Convenient and easy lifting thanks to hydraulics and long lever
- ▶ Rubber pad protects saddle and vehicle
- ▶ Wide surface of the support disc

Model		SRWH 2000 LF DS
Art. no.		6201125
Load capacity	t	2
Lifting height max.	mm	430
Underride height min.	mm	70
Final height max.	mm	500
Dimensions (L x W x H) approx.	mm	822 x 360 x 214
Weight approx.	kg	43



RWHA 1502/ RWHA 2501 – Lightweight aluminium trolley jack for sporty low-slung vehicles

- ▶ Light, robust Aluminium construction
- ▶ Two-part pump lever with foam grip ensures a firm grip and easy handling
- ▶ Extra flat, particularly suitable for lowered cars
- ▶ With double piston, so fewer pumping operations up to the maximum final height necessary
- ▶ Valve control via rotating pump lever
- ▶ Slow, safe lowering when loaded
- ▶ With sturdy, cylindrical load roller
- ▶ Rubber pad protects saddle and vehicle



Model		RWHA 1502	RWHA 2501
Art. no.		6201135	6201136
Load capacity	t	1.5	2.5
Lifting height max.	mm	260	395
Underride height min.	mm	90	90
Final height max.	mm	350	485
Width inside / outside	mm	145 / 240	280 / 300
Length max.	mm	1440	1810
Dimensions (L x W x H) approx.	mm	500 x 240 x 132	660 x 300 x 162
Weight approx.	kg	14	27

Accessories	Art. no.
Cross member	6201139

Special trolley jacks

SRWH 5000 LH / 10000 LH –Special trolley jack with foot pedal for high load capacities

- ▶ Particularly long design ensures extra stability
- ▶ Additional foot pedal for lifting with quick lift
- ▶ Robust construction
- ▶ Steel load rollers and swivel rollers
- ▶ Slow and safe lowering when loaded thanks to large support plate
- ▶ Valve control via internal linkage with rotary knob
- ▶ Rubber-coated T-handle for easy manoeuvring



Model		SRWH 5000 LH	SRWH 10000 LH
Art. no.		6201150	6201155
Load capacity	t	5	10
Stroke	mm	535	525
Final height	mm	685	685
Underride height min./ max.	mm	150 / 685	160 / 685
Width inside / outside	mm	245 / 366	270 / 494
Length max.	mm	1505	1637
Dimensions (L x W x H) approx.	mm	1505 x 366 x 200	1637 x 494 x 249
Weight approx.	kg	89	133

Adjustable crossbeam for trolley jack

- ▶ Increases the stability of the vehicle and jack
- ▶ Sturdy steel construction
- ▶ Extendable up to 940 mm length
- ▶ Adjustable height of the support surface
- ▶ Can be used from all sides of the vehicle

Model		Crossbeam for trolley jack
Art. no.		6201139
Load capacity	t	2
Length min./ max.	mm	710 / 940
Safety chain length	mm	235
Support surface (L x W)	mm	120 x 120
Support surface height adjustment	mm	55
Dimensions (L x W x H) approx.	mm	710 x 140 x 125
Weight approx.	kg	12.3



application

Scope of delivery:
 ▶ Threaded screw size
 M 24 x 1.5 mm



Note:
 Remove the saddle for mounting the cross member

Special trolley jack series WWH - Pneumatic-hydraulic workshop jack

- ▶ Controlled, safe lifting and lowering
- ▶ For operation with compressed air from an external generator
- ▶ Hard chrome-plated pistons with extra smooth surface
- ▶ Compact design
- ▶ With sturdy rollers made of PU-coated cast iron
- ▶ T-handle for easy manoeuvring
- ▶ With practical carrying handle on the housing
- ▶ The two cast iron attachment pieces can be used individually or stacked on top of each other to extend the lifting height



> 3-stage version

WWH 50002 PH

WWH 60000 PH

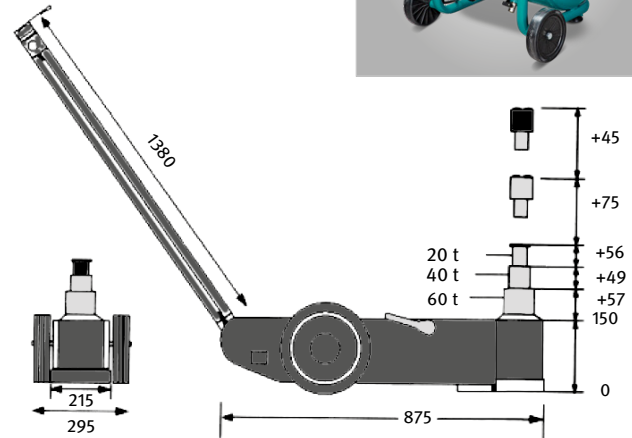


WWH 30002 PH

Scope of delivery:

- > Cast iron top piece, 45 mm
- > Cast iron top piece, 75 mm

New



WWH 60000 PH Dimensions and load capacity



> Intuitive safety rotary head with compressor connection



> Illustration shows optionally available (aircraft) compressor with compressed air set

! Suitable compressors can be found in the AIRCRAFT main catalogue and on www.aircraft-kompressoren.com



Model		WWH 30002 PH	WWH 50002 PH	WWH 40003 PH	WWH 60000 PH
Art. no.		6201132	6201130	6201131	6201112
Technical data					
Load capacity (lower lifting height)	t	30	50	40	60
Load capacity (medium lifting height)	t	15	25	20	40
Load capacity (upper lifting height)	t	–	–	10	20
Lifting height (upper lifting height)	t	–	–	10: 284	20: 312
Lifting height (medium lifting height)	mm	293	25: 444	20: 231	40: 256
Lifting height (lower lifting height)	mm	224	50: 330	40: 182	60: 207
Height of top pieces	mm	45 / 75	73 + 80	75 + 45	75 + 45
Underride height	mm	150	215	125	150
Operating pressure	bar	9–12	9-12	9-12	8-12
Air requirement	l / stroke	61	113	110	97
Dimensions (L x W) approx.	mm	503 x 150	805 x 282	830 x 295	875 x 295
Weight approx.	kg	32	73	44	64

Tyre fitting trolley

New

WOD 70 / WOD 70 SC oil collecting devices - For a quick and clean oil change

- ▶ Perfectly suited for car oil changes
- ▶ Height-adjustable hopper - adjustable for comfortable working in any position
- ▶ Compressed air connection - allows the used oil to be emptied using air pressure
- ▶ Air regulator and safety valve installed to prevent overpressurisation
- ▶ Integrated riser tube for the current oil level
- ▶ Ideal for professional use in vehicle workshops and in the DIY sector
- ▶ Robust oil drip tray with 4 sturdy rollers for effortless manoeuvring

- WOD 70 SC**
- ▶ Integrated suction function, perfect for hard-to-reach drain plugs
 - ▶ Faster oil change than with the normal oil draining process

- ▶ Precise determination of oil quantity and condition thanks to transparent measuring cup during suction"

Scope of delivery WOD 70 SC:

- > 1x nylon dipstick probe 6 mm, length 710 mm
- > 1x nylon dipstick probe 8 mm, length 710 mm
- > 1x copper dipstick probe 6 mm, length 710 mm

Model		WOD 70	WOD 70 SC
Art. no.		6206005	6206010
Technical data			
Tank volume	l	70	68
Measuring cup volume	l	-	10
Funnel height	mm	140	140
Funnel diameter	mm	350	400
Volume flow suction	l/min	-	0.6 - 1.6
Drain hose length	m	1.9	1.9
Suction hose length	m	-	1.4
Drain hose diameter	mm	25	19
Dimensions (L x W x H) approx.	mm	495x495x1400 - 1900	595x595x1500 - 1850
Weight (net) approx.	kg	23	22.5



WOD 70

WOD 70 SC

RMW 250 tyre mounting trolley - For ergonomic manoeuvring of wheels

- ▶ Sturdy tubular steel construction
- ▶ For picking up and transporting tyres and rims without straining your back
- ▶ Tyres easy to control thanks to rotating support rollers
- ▶ 3-way adjustable wheel support
- ▶ Ideally suited for tyre dealers, garages and haulage companies



> for adjusting the wheel to the wheel hub and transporting it

Model		RMW 250
Art. no.		6201160
Technical data		
Min. / max. tyre width	mm	240 / 570
Min. / max. tyre diameter	mm	250 / 800
Max. load	kg	250
Dimensions (L x W x H) approx.	mm	1160 x 702 x 251
Weight approx.	kg	11.5



Multifunctional table MFT 35 -

Versatile multifunctional table for the automotive sector

- ▶ Impact protection at all important contact points to protect sensitive areas, e.g. bodywork and wheel rims
- ▶ Perfect for storing tools, screws and spare parts during repairs
- ▶ Table can be folded down by 90°
- ▶ Storage table loadable up to 35 kg
- ▶ 15-position height adjustment in 25 mm hole pattern
- ▶ Two parking brakes on the rollers ensure a secure stand
- ▶ Sturdy welded construction
- ▶ Perfect for transporting tyres and oil drums, for example, in conjunction with the storage shelf available as an accessory



- › Impact protection at all important contact points to protect sensitive areas, e.g. bodywork and wheel rims
- › Two parking brakes on the rollers ensure a secure stand



- › Perfect for storing tools, screws and spare parts during repairs



- › Table can be folded down by 90°
- › Shown shelf available as an accessory - for transporting tyres and oil drums, for example

Model		MFT 35
Art. no.		6201910
Technical data		
Storage table Load capacity	kg	35
Storage table dimensions (L x W x H)	mm	750 x 522 x 28
Height min. – max.	mm	950 – 1300
Hole grid spacing	mm	25
Number of hole patterns		15
Load castor diameter	mm	45
Load castor width	mm	45
Dimensions (L x W x H)	mm	760 x 740 x 1,300
Weight approx.	kg	17.5

Spring tensioners

Spring tensioner SFS 1000 D – For quick and secure tensioning of chassis springs

- ▶ Up to 1000 kg clamping force
- ▶ Ideal for tensioning suspension struts
- ▶ Convenient operation thanks to pneumatic actuation via foot pedal
- ▶ Extremely safe thanks to robust safety cage
- ▶ Mounting jaws infinitely adjustable to the desired spiral diameter
- ▶ Easy to transport thanks to attached transport rollers and handle
- ▶ Tool-free jaw change



› Extremely safe thanks to robust safety cage



› Operation via foot pedal



› Continuously adjustable jaws



Model		SFS 1000 D
Art. no.		6201220

Technical data		
Connection thread	"	NPT 3/8
Frame material		Steel
Operating pressure	bar	8
Clamping force max.	kg	1000
Stroke length	mm	420
Spring diameter	mm	102 – 165
Dimensions (L x W x H) approx.	mm	830 x 580 x 1420
Weight approx.	kg	63.5

- Scope of delivery:**
- › Small and large clamping jaw
 - › One vice jaw

