

# ***WORKSHOP SUPPLIES***



# Stools/chairs/standing aids

## Assembly stool MH 1

- ▶ Wipe-clean assembly stool
- ▶ Robust steel construction with swivel rollers
- ▶ Practical tool tray
- ▶ Pneumatically height-adjustable seat



<b>Model</b>	<b>MH 1</b>
Art. no.	6201900

<b>Technical data</b>	
Load capacity	100 kg
Seat height	440 – 530 mm
Dimensions (L x W x H) approx.	380 x 380 x 440 mm
Weight approx.	5.7 kg

## Assembly stool MH 2 – with practical tool tray

- ▶ Practical tool tray with subdivision
- ▶ Steel construction with swivel rollers
- ▶ Wipe-clean and upholstered seat



<b>Model</b>	<b>MH 2</b>
Art. no.	6201902

<b>Technical data</b>	
Static vertical load max.	136 kg
Seat height	380 mm
Dimensions (L x W x H) approx.	365 x 370 x 380 mm
Weight approx.	4.6 kg

## Assembly stool MH-S 3 – with drawers for tool storage

- ▶ Three drawers for tool storage
- ▶ Practical can and bottle holders
- ▶ Steel construction with swivel rollers
- ▶ Wipe-clean and upholstered seat



<b>Model</b>	<b>MH-S 3</b>
Art. no.	6201903

<b>Technical data</b>	
Static vertical load max.	120 kg
Seat height	367 mm
Dimensions (L x W x H) approx.	370 x 400 x 367 mm
Weight approx.	8.8 kg

## Swivel stool DH 1

- ▶ Standing aid seat made of PUR integral foam
- ▶ Sit-stand support
- ▶ Flat base, polished (Ø 610 mm) with double rollers (Ø 65 mm)
- ▶ 5-year warranty\*

<b>Model</b>	<b>DH 1</b>
Art. no.	6800030

<b>Technical data</b>	
Load capacity	120 kg
Seat tilt	+2° to +15°
Seat height	460 – 610 mm
Seat width	390 mm
Seat depth	350 mm
Colour	Black

Made in Germany



## Standing support SH 1

- ▶ Standing aid seat made of PUR integral foam
- ▶ Sit-stand support
- ▶ Flat base, polished (Ø 655 mm)
- ▶ Seat-stop rollers (Ø 65mm)
- ▶ Unloaded braked - loaded blocked
- ▶ 5-year warranty\*

<b>Model</b>	<b>SH 1</b>
Art. no.	6800025

<b>Technical data</b>	
Load capacity	120 kg
Seat tilt	+2° to +15°
Seat height	690 – 900 mm
Seat width	390 mm
Seat depth	350 mm
Colour	Black

Made in Germany



## AS 2 work chair

- ▶ Backrest and seat PUR integral foam
- ▶ Die-cast aluminium base, polished (Ø 655 mm) with double rollers (Ø 65 mm)
- ▶ Height adjustment with safety gas spring
- ▶ 5-year warranty\*



<b>Model</b>	<b>AS 2</b>	<b>AS 1</b>	<b>HS 1</b>
Art. no.	6800036	6800035	6800020

<b>Technical data</b>				
Load capacity	kg	120		
Backrest inclination	°	0 – -20	-8 – +10	-4 – +10
Seat tilt	°	0 – 5	-4 – +10	-8 – +10
Seat height	mm	495 – 640	460 – 640	690 – 930
Seat width	mm	465	460	
Seat depth	mm	460	435	
Colour		Black		

## AS 1 work chair

- ▶ With adjustable backrest pressure
- ▶ XL backrest made of PUR integral foam
- ▶ With extended back bar
- ▶ Seat made of PUR integral foam
- ▶ Flat base, polished (Ø 655 mm) with double rollers (Ø 65 mm)
- ▶ Incl. armrest
- ▶ Safety armrest made of hard plastic
- ▶ 5-year warranty\*



## High chair HS 1

- ▶ With adjustable backrest pressure
- ▶ XL backrest made of PUR integral foam
- ▶ Seat made of PUR integral foam
- ▶ Flat base, polished (Ø 713 mm) with seat-stop rollers (Ø 65 mm)
- ▶ Unloaded braked - loaded blocked
- ▶ 5-year warranty\*

<b>Accessories for HS 1</b>	<b>Art. no.</b>
Armrest	6800040

## Roller boards MRB 40 KS and KRL 1

### MRB 40 KS

- ▶ Wipe-clean plastic mounting roller board
- ▶ Ergonomic with padded headrest, handle and six oil-resistant swivel castors
- ▶ Practical side shelves

### KRL 1

- ▶ Rolling lounge can be folded into an assembly stool or for space-saving storage
- ▶ Robust steel construction with upholstered lying/seating surface and seven swivel castors

Model	MRB 40 KS	KRL 1
Art. no.	6201801	6201802

Technical data	MRB 40 KS	KRL 1
Max. load capacity	120 kg	120 kg
Dimensions (L x W x H) approx.	1010 x 475 x 130 mm	1020 x 400 x 140 mm (lounge) 485 x 400 x 440 mm (stool)
Weight approx.	4.8 kg	6.7 kg

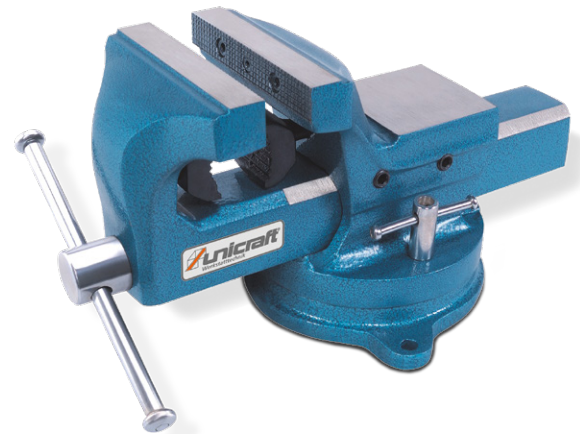


## Vices - with tubular clamping jaws and rotary disc

- ▶ Front-opening quality vices made from break-proof cast iron
- ▶ Interchangeable clamping jaws with serrated teeth
- ▶ Adjustable guide ensures parallel clamping
- ▶ With removable pipe clamping jaws
- ▶ Large anvil area for smaller straightening and upsetting work
- ▶ Spindle guide in the housing, thus optimised protection against damage and dirt
- ▶ Foot can be rotated through 360° with locking option
- ▶ Hammer blow blue lacquered

Model	Vice 100 mm	Vice 125 mm	Vice 150 mm	Vice 175 mm
Art. no.	6350100	6350125	6350150	6350175

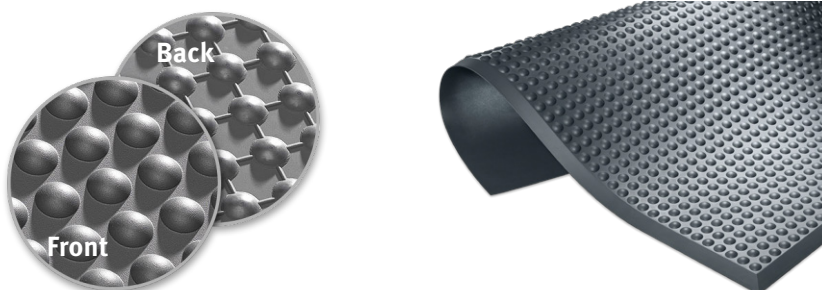
Technical data	Vice 100 mm	Vice 125 mm	Vice 150 mm	Vice 175 mm
Jaw width	100 mm	125 mm	150 mm	175 mm
Span min.	102 mm	125 mm	152 mm	180 mm
Clamping depth	66 mm	82 mm	104 mm	108 mm
Anvil size	73 x 58 mm	78 x 73 mm	90 x 84 mm	104 x 99 mm
Total length	305 mm	355 mm	455 mm	530 mm
Turntable	128 mm	145 mm	165 mm	190 mm
Holes in the turntable Ø	10.3 mm	13.5 mm	14 mm	14 mm
Weight approx.	8.3 kg	12.4 kg	18.4 kg	27.4 kg



## Workplace mats – for dry and wet areas

Made in Germany

- ▶ Fire retardant
- ▶ Made of polyurethane on polyether basis
- ▶ Surface: nubbed
- ▶ 5-year warranty
- ▶ Underside: nubbed for maximum standing comfort and slip resistance
- ▶ Ergonomic floor covering for standing workstations
- ▶ Oil and petrol resistant



Model	Work mat 1840 x 640 mm	Work mat 1840 x 940 mm	Work mat 1840 x 640 mm	Work mat 1840 x 940 mm
Art. no.	6800000	6800005	6800001	6800006

Technical data	Work mat 1840 x 640 mm	Work mat 1840 x 940 mm	Work mat 1840 x 640 mm	Work mat 1840 x 940 mm
Thickness	14 mm	14 mm	14 mm	14 mm
Colour	anthracite	anthracite	anthracite	anthracite
Temperature resistance	-35 °C to +95 °C	-35 °C to +95 °C	-35 °C to +95 °C	-35 °C to +95 °C
Fire class	B1 as per DIN 4102	B1 as per DIN 4102	B1 as per DIN 4102	B1 as per DIN 4102
Dimensions (L x W) approx.	1840 x 640 mm	1840 x 940 mm	3040 x 640 mm	3040 x 940 mm
Weight approx.	6 kg	9 kg	10.5 kg	15 kg